

Audible and Visible Warning Devices

Traffic Lights

TRAFFIC 028A



- Red 8" LED traffic light kit
- Black casing
- Power Supply: 120 VAc
- Current Consumption: 6W
- Type: LED
- Operation Temperature: -40°C to 74°C (-40°F to 165°F)
- Lens Diameter: 8"
- Moisture resistant
- Materials: Polycarbonate, galvanized steel (supports)
- Dimensions: 10"W x 20"H x 20"D
- Includes: Traffic light, mounting support kit
- For replacement lens: order TRAFFIC007A

TRAFFIC 033A



- Green 8" LED traffic light kit
- Black casing
- Power Supply: 120 VAc
- Current Consumption: 6W
- Type: LED
- Operation Temperature: -40°C to 74°C (-40°F to 165°F)
- Lens Diameter: 8"
- Moisture resistant
- Materials: Polycarbonate, galvanized steel (supports)
- Dimensions: 10"W x 20"H x 20"D
- Includes: Traffic light, mounting support kit
- For replacement lens: order TRAFFIC009A

TRAFFIC 049A



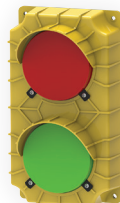
- Yellow 8" LED traffic light kit
- Black casing
- Power Supply: 120 VAc
- Current Consumption: 6W
- Type: LED
- Operation Temperature: -40°C to 74°C (-40°F to 165°F)
- Lens Diameter: 8"
- Moisture resistant
- Materials: Polycarbonate, galvanized steel (supports)
- Dimensions: 10"W x 20"H x 20"D
- Includes: Traffic light, mounting support kit
- For replacement lens: order TRAFFIC008A

TRAFFIC 029A



- Red and green 8" LED traffic light kit
- Black casing
- Power Supply: 120 VAc
- Current Consumption: 6W per lens
- Type: LED
- Operation Temperature: -40°C to 74°C (-40°F to 165°F)
- Lens Diameter: 8"
- Moisture resistant
- Materials: Polycarbonate, galvanized steel (supports)
- Dimensions: 10"W x 30"H x 20"D
- Includes: Traffic light, mounting support kit
- For replacement lens: order TRAFFIC007A (red) and TRAFFIC009A (green)

TRAFFIC 036A/037A



- Red and green 4.25" LED traffic light
- Yellow casing
- Power Supply: 120 VAc (TRAFFIC036A)/24 Vdc (TRAFFIC037A)
- Current Consumption: 0.10 A (TRAFFIC036A)/0.13 A (TRAFFIC037A)
- Type: LED
- Operation Temperature: -29°C to 54°C (-20°F to 129°F)
- Lens Diameter: 4.25"
- Dimensions: 6.5"W x 11.5"H x 3.75"D
- IP54
- cULus Listed
- Includes: Traffic light
- For black casing: order TRAFFIC036B/037B

TRAFFIC 036B/037B



- Red and green 4.25" LED traffic light
- Black casing
- Power Supply: 120 VAc (TRAFFIC036B)/24 Vdc (TRAFFIC037B)
- Current Consumption: 0.10 A (TRAFFIC036B)/0.13 A (TRAFFIC037B)
- Type: LED
- Operation Temperature: -29°C to 54°C (-20°F to 129°F)
- Lens Diameter: 4.25"
- Dimensions: 6.5"W x 11.5"H x 3.75"D
- IP54
- cULus Listed
- Includes: Traffic light
- For yellow casing: order TRAFFIC036A/037A



Audible and Visible Warning Devices

Traffic Lights and LED Light Strips

TRAFFIC 046A/047A



- Red and green 3.75" LED traffic light
- Yellow casing
- Power Supply: 120 V_{AC} (TRAFFIC046A)/24 V_{DC} (TRAFFIC047A)
- Current Consumption: 30 mA (TRAFFIC046A)/70 mA (TRAFFIC047A)
- Type: LED
- Lens Diameter: 3.75"
- Dimensions: 5" W x 10" H x 2.5" D
- Weather-proof housing
- Includes: Traffic light
- For black casing: order TRAFFIC046B/047B

TRAFFIC 046B/047B



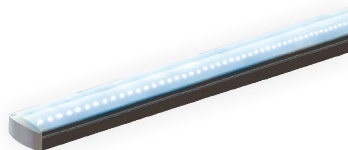
- Red and green 3.75" LED traffic light
- Black casing
- Power Supply: 120 V_{AC} (TRAFFIC046B)/24 V_{DC} (TRAFFIC047B)
- Current Consumption: 30 mA (TRAFFIC046B)/70 mA (TRAFFIC047B)
- Type: LED
- Lens Diameter: 3.75"
- Dimensions: 5" W x 10" H x 2.5" D
- Weather-proof housing
- Includes: Traffic light
- For yellow casing: order TRAFFIC046A/047A

TRAFFIC 038/040



- Red, yellow and green 8" LED traffic light kit
- Black casing
- Power Supply: 120 V_{AC} (TRAFFIC038)/24 V_{DC} (TRAFFIC040)
- Current Consumption: 6W per lens (TRAFFIC038) / red 5 W, yellow 11 W, green 9 W (TRAFFIC040)
- Type: LED
- Lens Diameter: 8"
- Operation Temperature: -40°C to 74°C (-40°F to 165°F)
- Moisture resistant
- Materials: Black polycarbonate, galvanized steel (supports)
- Dimensions: 10" W x 40" H x 20" D
- Includes: Traffic light, mounting support kit
- For replacement lens (TRAFFIC038): order TRAFFIC007A (red), TRAFFIC008A (yellow) and TRAFFIC009A (green)
- For replacement components (TRAFFIC040): order TRAFFIC0039

LEDSTRIP 001/002/003/004



- LED light strip
- Power Supply: 24 V_{DC}
- Current Consumption: 0.033 A/0.067A/0.117A/0.233 A
- Operation Temperature: -20°C to 40°C (-4°F to 104°F)
- IP67 (LED ribbon)
- Material: Aluminum (profile), frosted plastic (lens)
- Red, green, blue LED sequences available
- Lengths Available: 14"/27"/46"/96"
- Includes: 1 LED strip, sold per unit
- For wiring sequences: order MODKIT168



Audible and Visible Warning Devices

Beacons and Sirens

BEACON 012A/012B



- Rotating mirror beacon, red/amber LED
- Power Supply: 24 V_{AC}/V_{DC}
- Current Consumption: 125 mA
- Lens Diameter: 3.31"
- Materials: Polycarbonate (globe), ABS (body), painted metal (mounting bracket)
- Dimensions: 3.31" Ø x 5.81" H
- Operation Temperature: -10°C to 50°C (-14°F to 122°F)
- IP23
- UL listed, CSA approved
- Includes: 1 beacon, mounting bracket

BEACON 013A/013B



- Rotating mirror beacon, red/amber LED
- Power Supply: 120 V_{AC}
- Current Consumption: 42 mA
- Lens Diameter: 5.12"
- Materials: Polycarbonate (globe), ABS (body), painted metal (mounting bracket)
- Dimensions: 5.12" Ø x 7.85" H
- Operation Temperature: -30°C to 50 °C (-22°F to 122°F)
- IP66/IP67
- UL listed, CSA approved
- Includes: 1 beacon, mounting bracket

HORN 015



- Beacon with integrated siren
- Wall mounted
- Power Supply: 24 V_{DC}
- Current Consumption: 56 mA (horn), 170 mA (beacon)
- Brightness: 75 cd
- Sound Power Level: 100 dBA at 10'
- Operation Temperature: -35°C to 66°C (-31°F to 150.8°F)
- ANSI/UL 1638 and 464 listed
- Dimensions (beacon): 4.75"W x 5.75"H x 3.25"D
- Dimensions (rectifier): 1"W x 1"H x 1"D
- Includes: Beacon, rectifier
- Replacement components: order HORN014, RECTIFIER010

Audible and Visible Warning Devices

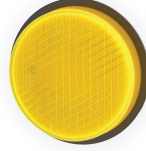
Components and Accessories

TRAFFIC 007A



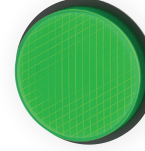
- Red 8" LED replacement lens
- Power Supply: 120 VAc
- Current Consumption: 6W
- Type: LED
- Operation Temperature: -40°C to 74°C (-40°F to 165°F)
- Lens Diameter: 8"
- Dimensions: 8.25" Ø x 4.08" D
- Compatible with: TRAFFIC028A, TRAFFIC029A, TRAFFIC038

TRAFFIC 008A



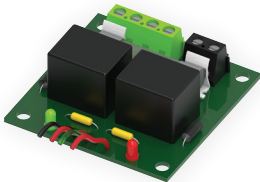
- Yellow 8" LED replacement lens
- Power Supply: 120 VAc
- Current Consumption: 6W
- Type: LED
- Operation Temperature: -40°C to 74°C (-40°F to 165°F)
- Lens Diameter: 8"
- Dimensions: 8.25" Ø x 4.08" D
- Compatible with: TRAFFIC038A, TRAFFIC049A

TRAFFIC 009A



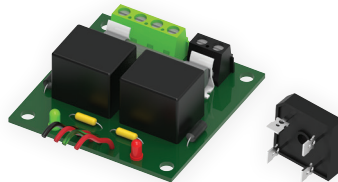
- Green 8" LED replacement lens
- Power Supply: 120 VAc
- Current Consumption: 6W
- Type: LED
- Operation Temperature: -40°C to 74°C (-40°F to 165°F)
- Lens Diameter: 8"
- Dimensions: 8.25" Ø x 4.08" D
- Compatible with: TRAFFIC029A, TRAFFIC033A, TRAFFIC038

MODKIT 027B1/027D1



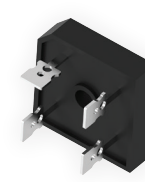
- Universal auxiliary output module kit for electronically controlled operators
- Enables the connection of audible and visible warning devices
- 2 relay outputs
- Applications: Opera, Manaras, Silencio® (MODKIT027B1)/Rapido® (MODKIT027D1)
- Power Supply: 24 Vdc
- Dimensions: 2" L x 2" H x 1" D
- ROHS compliant
- Includes: Module, supports
- Replacement parts: order BOARD048

MODKIT 168



- Auxiliary auxiliary output module kit for electronically controlled operators
- Enables the connection of 24 Vdc LED light strips
- 2 relay outputs to separately manage 2 different colors
- Power Supply: 24 Vdc
- Dimensions: 2" W x 2" H x 1" D
- Dimensions (rectifier): 1.125" W x 1.125" H x 0.79" D
- ROHS compliant
- Includes: Module, supports, rectifier
- Replacement parts: order BOARD048, RECTIFIER011

RECTIFIER 011



- Rectifier
- Power Supply: 24 VAc
- Output Capacity: 24 Vdc, 35 A max.
- To be placed inside operator control box or separate control panel
- Centerhole mounting (#10 screw max.)
- Dimensions: 1.125" W x 1.125" H x 0.79" D
- Tab Terminals: 4 x 0.25"
- Operation Temperature: -55°C to 150°C (-67°F to 302°F)
- Includes: Rectifier (without wire leads)



800-361-2260 • manaras.com

Specifications and design modifications subject to change without prior notice. AC.2023.01.01.R1
For additional information, availability or additional accessories not listed, please consult inside sales.