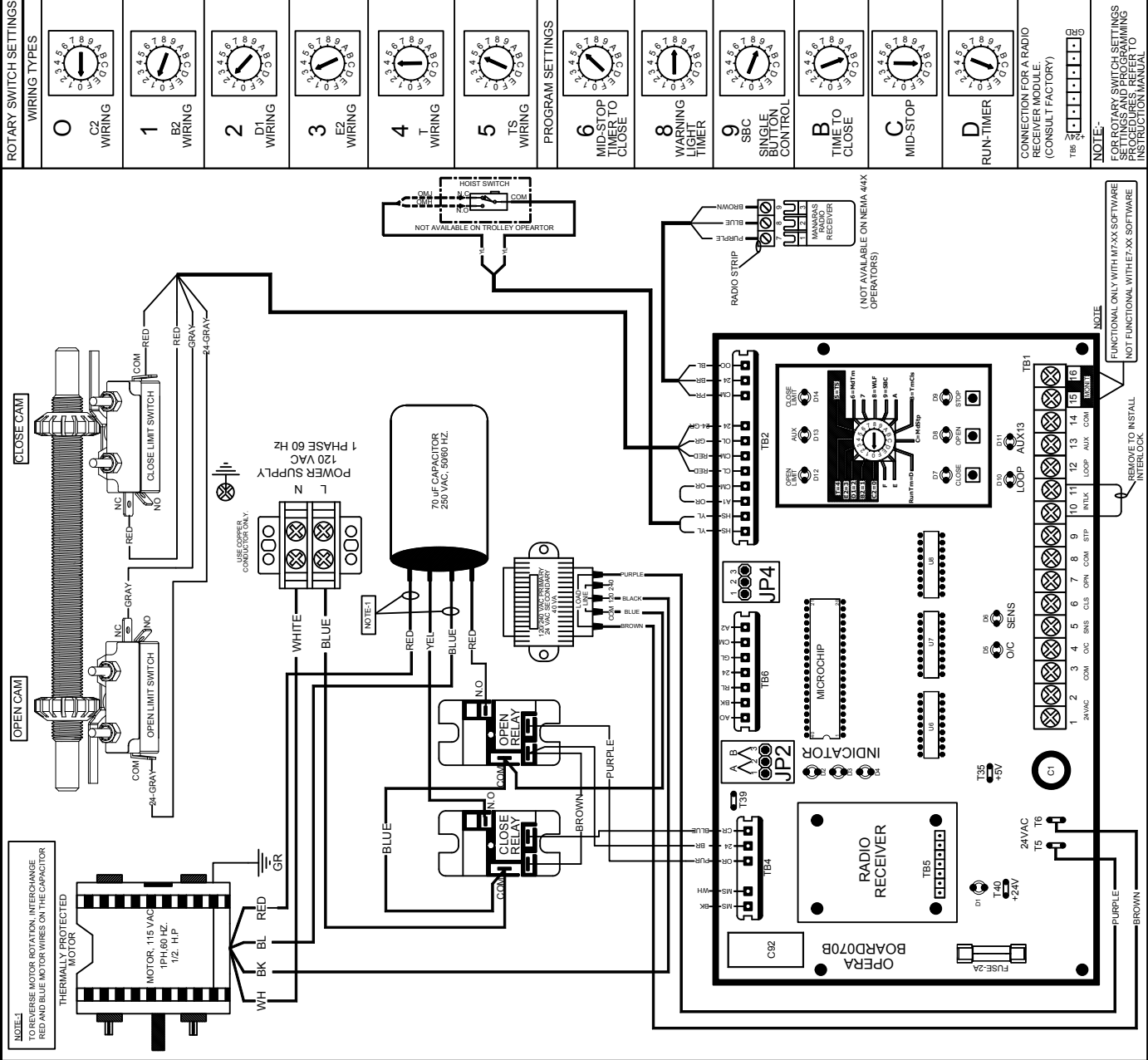


WIRING DIAGRAM FOR 1-PHASE OPERATOR - MODEL : OMH/OMJ/OMT

EDWG11070R8801



ROTTARY SWITCH SETTINGS	
0	C2 WIRING
1	B2 WIRING
2	D1 WIRING
3	E2 WIRING
4	WIRING
5	TS WIRING
PROGRAM SETTINGS	
6	MID-STOP TIMER TO CLOSE
8	WARNING LIGHT TIMER
9	SBC SINGLE BUTTON CONTROL
B	TIME TO CLOSE
C	MID-STOP
D	RUN-TIMER

EXTERNAL WIRING

LINE POWER	POWER	EXTERNAL INTERLOCK	SAFETY REVERSE	OPEN/CLOSE COMMAND	SINGLE PUSH-BUTTON STATION	TWO PUSH-BUTTON STATION	LOOP DETECTOR
L N GR	1 2	10 11	3 5	3 4	6 7 8 9	6 7 8 9	12 14

WARNING

- 1 USE 18AVC OR HIGHER FOR WIRING ALL EXTERNAL CONNECTIONS
- 2 MOTORIZED DOORS CAN CAUSE SERIOUS INJURIES OR DEATH. MANARAS STRONGLY RECOMMENDS THE USE OF ENTRAPMENT PROTECTION SYSTEMS, ESPECIALLY IN THE OF CASE MOMENTARY CONTACT TO CLOSE AS IN B2 WIRING

CAUTION

PLACE A JUMPER BETWEEN TERMINAL #6 AND #9, IF STOP BUTTONS NOT USED.

ON BOARD JUMPER SETTINGS

JP4 DISCONNECT SWITCH
PRESENT NOT PRESENT

JP2 FOR 120VAC
2,3

MONITORED PHOTOCELL

CONTACT FOR OPEN DOOR DEVICE (LOOP DETECTOR)

KEY-SWITCH

RADIO RECEIVER

RADIO CONTROL

WIRING DIAGRAM, 120VAC 1-PHASE

DRAWN BY: BP
23 MAY 2010 EDWG11070R8801 REV. D 28A NOV 2011

MANARAS OPERA
POINTE-CLAIRE, QC H8R 1A8
TEL: 1-800-361-2280
FAX: 1-888-626-0606

NOTE 1: TO REVERSE MOTOR ROTATION, INTERCHANGE RED AND BLUE MOTOR WIRES ON THE CAPACITOR

NOTE 2: THERMALLY PROTECTED MOTOR

NOTE 3: MOTOR, 115 VAC 1PH 60 HZ 1/2 H.P

NOTE 4: USE OPERA ONLY COLLECTOR VOLTAGE

NOTE 5: 70 uF CAPACITOR 250 VAC 50/60 HZ

NOTE 6: 24 VAC SECONDARY 24VAC 50/60 HZ

NOTE 7: MANARAS RECEIVER (NOT AVAILABLE ON TROLLEY OPERATORS)

NOTE 8: FUNCTIONAL ONLY WITH M7-XX SOFTWARE (NOT FUNCTIONAL WITH E7-XX SOFTWARE)

NOTE 9: REMOVE TO INSTALL INTERLOCK

NOTE 10: FUNCTIONAL ONLY WITH M7-XX SOFTWARE (NOT FUNCTIONAL WITH E7-XX SOFTWARE)

NOTE 11: RADIO CONTROL TERMINAL STRIP

NOTE 12: CONTACT FOR OPEN DOOR DEVICE (LOOP DETECTOR)

NOTE 13: CONTACT FOR SAFETY REVERSE DOOR DEVICE

NOTE 14: FACTORY INSTALLED AVAILABLE TO MANARAS PARTS ONLY

NOTE 15: FUSE-2A

NOTE 16: 24VAC

NOTE 17: 120VAC

NOTE 18: 1PH 60 HZ

NOTE 19: 24 VAC POWER AVAILABLE TO MANARAS PARTS ONLY