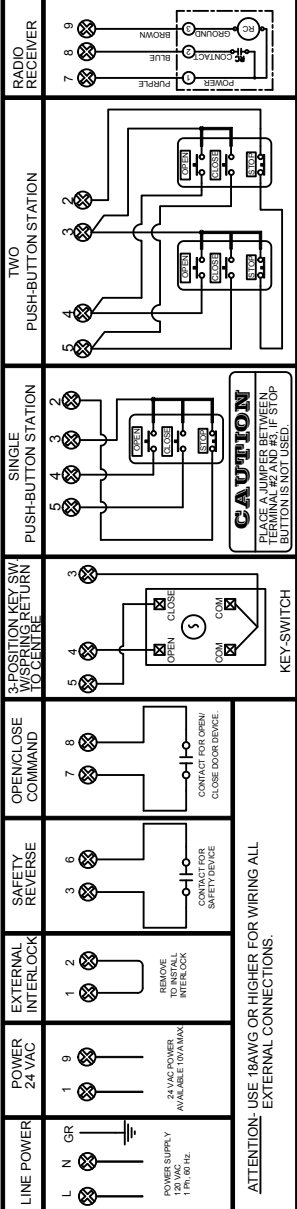


EXTERNAL WIRING



ATTENTION- USE 18AWG OR HIGHER FOR WIRING ALL EXTERNAL CONNECTIONS.

ON SITE MODIFICATIONS

**WARNING**  
 MOTORIZED DOORS CAN CAUSE SERIOUS INJURIES OR DEATH. MANARAS STRONGLY RECOMMENDS THE USE OF ENTRAPMENT PROTECTION SYSTEMS, ESPECIALLY IN THE CASES OF MONITORING CONTACT TO CLOSE AS IN B2 WIRING.

**NOTE** (C) (B)  
 REMOVE THE RED WIRE WITH RAPID CONNECTOR FROM TERMINAL #10, AND TRANSFER IT TO TERMINAL #5.  
 REMOVE THE RED WIRE WITH RAPID CONNECTOR FROM TERMINAL #5, AND TRANSFER IT TO TERMINAL #10.

WIRING DIAGRAM- MEDIUM DUTY, 120 VAC, 1-PH