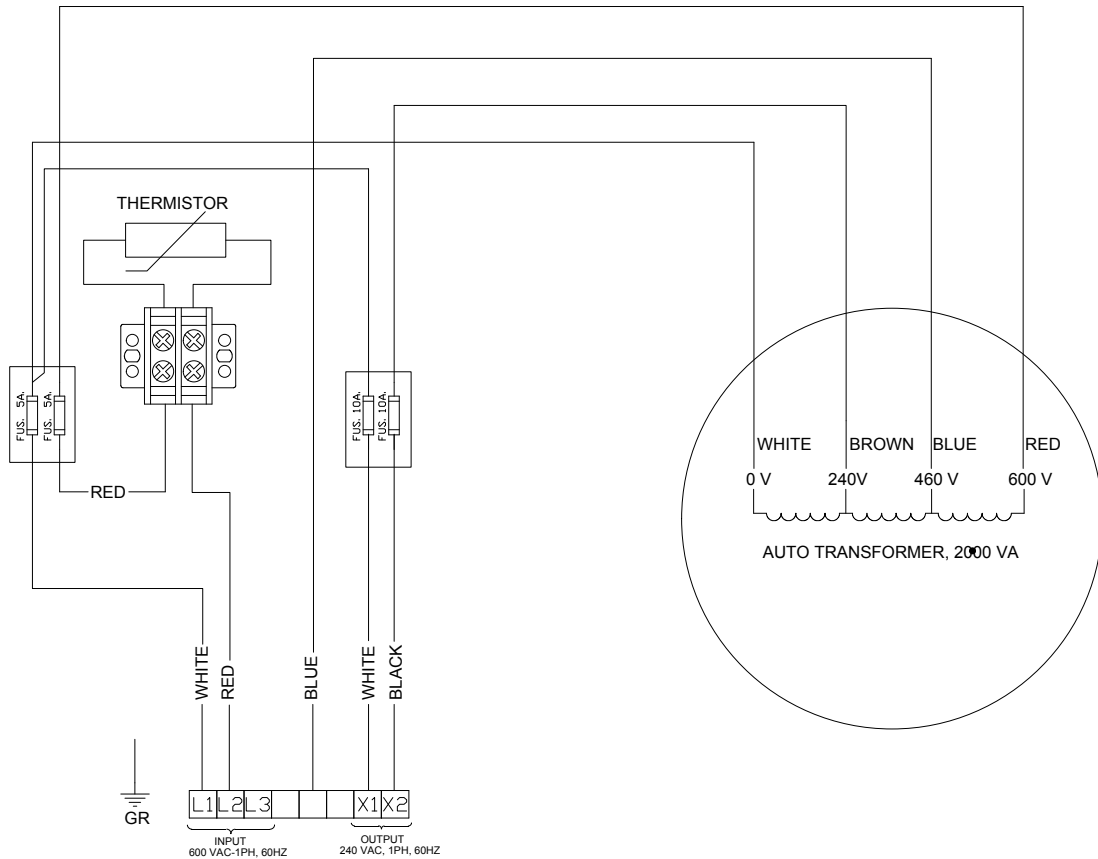


**POWER TRANSFORMER WIRING DIAGRAM**  
(TO ONLY BE USED WITH MANARAS -OPERA RAPIDO SERIES OPERATORS)

INPUT- 600 VAC-1PH, 60 HZ  
OUTPUT- 240 VAC-1PH, 60 HZ  
2000VA



WIRING INSTRUCTIONS  
USE ALL 14AWG WIRES

**ELECTRICAL SYMBOLS**

	PUSH-BUTTON NORMALLY OPEN		MANUAL HOIST INTERLOCK		TIMER
	PUSH-BUTTON NORMALLY CLOSED		DISCONNECT SWITCH		TIME-DELAYED CONTACT
	CONTACT NORMALLY OPEN		FUSE		COIL OR LOAD
	CONTACT NORMALLY CLOSED		THERMAL OVER-LOAD		GROUND
	DOUBLE-THROW RELAY CONTACT OR SWITCH		TRANSFORMER		TIMER CONTACTS
	LIMIT SWITCH		TERMINAL BLOCK AS SHOWN ON WIRING DIAGRAM INDICATING CONNECTION TO AN EXTERNAL DEVICE		TERMINAL BLOCK AS SHOWN ON SCHEMATIC DRAWING

**OPERATION AND CIRCUIT LOGIC DESCRIPTION**

THE INFORMATION CONTAINED HEREIN IS PROPRIETARY TO MANARAS/OPERA AND SHALL NOT BE REPRODUCED OR DISCLOSED OR USED FOR ANY DESIGN OR MANUFACTURE EXCEPT WHEN USER POSSESSES DIRECT WRITTEN AUTHORIZATION FROM MANARAS/OPERA.

TITLE: PAN-TX-001B - WIRING DIAGRAM				
DRAWN BY: BP	DATE: 12.DEC.2018	CAD FILE: EDWGIANOTNOT007	REV: A	DATE: 12.DEC.2018
MANARAS-OPERA 136 ONEIDA DRIVE POINTE-CLAIRE, QC H9R 1A8 TEL: 1-800-361-2260 FAX: 1-888-626-0606				