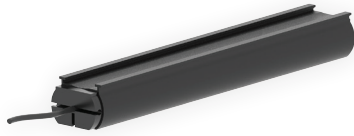


Electric Sensing Edges

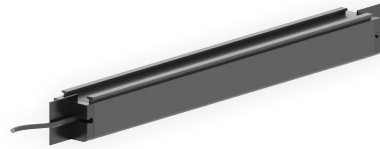
Monitored Electric Sensing Edges

SENSEEDGE 044UM



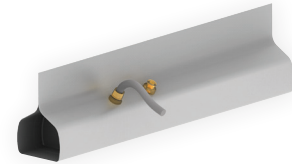
- For sectional doors, sliding gates
- Industry Codification: ME-123
- Type: 2-wire, monitored
- UL325 Recognized Component
- Wire Outlet Location: Universal
- Vertical or horizontal mount
- Section: 2" W x 1.5" H
- Min./Max. Length: 6' / 40'
- Power Supply: Self-powered by ECB main controller
- To be used with: INTERFACE002
- Sold per inch, made-to-order lengths, no returns or exchanges
- Mounting channels available
- For non-monitored function: order SENSEEDGE044U

SENSEEDGE 007UM



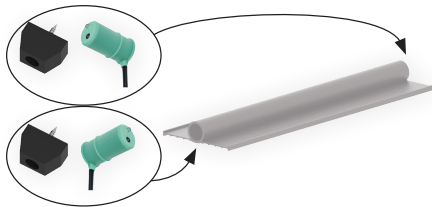
- For sectional doors
- Industry Codification: ME-113
- Type: 2-wire, monitored
- UL325 Recognized Component
- Wire Outlet Location: Universal, other options available
- Vertical or horizontal mount
- Section: 1.5" W x 1.5" H
- Min./Max. Length: 4' / 40'
- Power Supply: Self-powered by ECB main controller
- To be used with: INTERFACE002
- Sold per foot, made-to-order lengths, no returns or exchanges
- Mounting channels available
- For non-monitored function: order SENSEEDGE007

SENSEEDGE 018UM



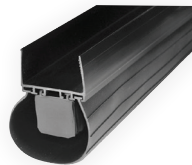
- For rolling doors
- Industry Codification: MT-22
- Type: 2-wire, monitored
- UL325 Recognized Component
- Wire Outlet Location: Universal, other options available
- Horizontal mount
- Section: 2" W x 2" H with 1.5" flap
- Min./Max. Length: 4' / 40'
- Power Supply: Self-powered by ECB main controller
- To be used with: INTERFACE002
- Sold per foot, made-to-order lengths, no returns or exchanges
- Must order 2" less than total width of door for flaps to fit
- For non-monitored function: order SENSEEDGE018U

SENSEEDGE 042



- Opto edge kit for sectional doors
- Monitored
- To be assembled in the field with HOSE010 (sold separately)
- UL325 Recognized Components (active), Nema 4X, IP65
- Operation Temperature: -25°C to 74°C (-13°F to 165°F)
- Power Supply: Self-powered by ECB main controller
- Mounting channels available
- Includes: Modular bumpers, photoeyes
- Not included: Rubber hose (HOSE010)
- Compatible with: CONNECTSET001, HOSE010
- Replacement parts order: BUMPER001, PHOTO061A (photoeyes only)

SENSEEDGE 046M

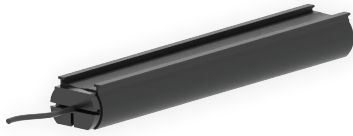


- For sectional doors
- Industry Codification: Clima-GUARD
- Type: 2-wire, monitored
- UL325 Recognized Component
- Wire Outlet Location: Options available
- Horizontal mount
- Section: 2.0" W x 2.75" H (including loop seal)
- Min./Max. Length: 4' / 40'
- Power Supply: Self-powered by ECB main controller
- To be used with: INTERFACE002
- Sold per foot, made-to-order lengths, no returns or exchanges
- Includes: Sensing edge, loop seal, mounting channel
- For non-monitored function: order SENSEEDGE046

Electric Sensing Edges

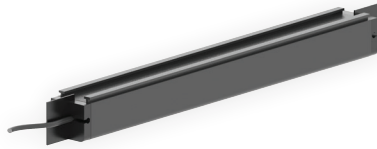
Non-Monitored Electric Sensing Edges

SENSEEDGE 044U



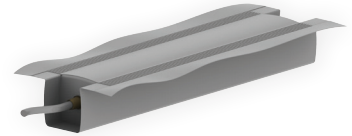
- For sectional doors, sliding gates
- Industry Codification: ME-123
- Type: 2-wire/NO, non-monitored
- Wire Outlet Location: Universal
- Vertical or horizontal mount
- Section: 2" W x 1.5" H
- Min./Max. Length: 6' / 40'
- Electrical Rating: 24 VAC/VDC, 0.5 A
- Sold per inch, made-to-order lengths, no returns or exchanges
- Mounting channels available
- For monitored function: order SENSEEDGE044UM
- For 4-wire option: order SENSEEDGE014 and MOD004 (failsafe sensing edge circuit)

SENSEEDGE 007



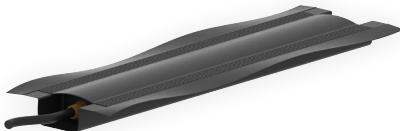
- For sectional doors
- Industry Codification: ME-113
- Type: 2-wire/NO, non-monitored
- Wire Outlet Location: Universal, other options available
- Vertical or horizontal mount
- Section: 1.5" W x 1.5" H
- Min./Max. Length: 4' / 40'
- Electrical Rating: 24 VAC/VDC, 0.5 A
- Sold per foot, made-to-order lengths, no returns or exchanges
- Mounting channels available
- For monitored function: order SENSEEDGE007UM
- For 4-wire option: order SENSEEDGE008 and MOD004 (failsafe sensing edge circuit)

SENSEEDGE 021



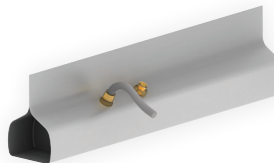
- For sectional doors/aircraft hangars (sliding doors)
- Industry Codification: MU-22
- Type: 2-wire/NO, non-monitored
- Wire Outlet Location: Options available
- Vertical or horizontal mount
- Section: 2" W x 2" H with 1.63" flap
- Min./Max. Length: 4' / 40'
- Electrical Rating: 24 VAC/VDC, 0.5 A
- Sold per foot, made-to-order lengths, no returns or exchanges
- For 4-wire option: order SENSEEDGE022 and MOD004 (failsafe sensing edge circuit)

SENSEEDGE 040



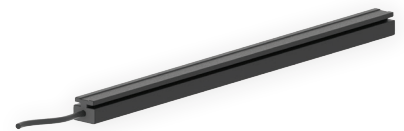
- For sectional doors
- Industry Codification: MU-21
- Type: 2-wire/NO, non-monitored
- Wire Outlet Location: Universal, other options available
- Vertical or horizontal mount
- Dimensions: 1.75" W x 1" H with 1.63" flap
- Min./Max. Length: 4' / 40'
- Electrical Rating: 24 VAC/VDC, 0.5 A
- Sold per foot, made-to-order lengths, no returns or exchanges

SENSEEDGE 018U



- For rolling doors
- Industry Codification: MT-22
- Type: 2-wire/NO, non-monitored
- Wire Outlet Location: Universal, other options available
- Horizontal mount
- Section: 2" W x 2" H with 1.5" flap
- Min./Max. Length: 4' / 40'
- Electrical Rating: 24 VAC/VDC, 0.5 A
- Sold per foot, made-to-order lengths, no returns or exchanges
- Must order 2" less than total width of door for flaps to fit
- For monitored function: order SENSEEDGE018UM
- For 4-wire option: order SENSEEDGE020 and MOD004 (failsafe sensing edge circuit)

SENSEEDGE 002



- For counter shutters, emergency switches, conveyor systems, rolling grills, barrier arms
- Industry Codification: ME-110
- Type: 2-wire/NO, non-monitored
- Wire Outlet Location: Options available
- Vertical or horizontal mount
- Section: 0.88" W x 0.75" H
- Min./Max. Length: 4' / 40'
- Electrical Rating: 24 VAC/VDC, 0.5 A
- Sold per foot, made-to-order lengths, no returns or exchanges
- Mounting channels available
- For 4-wire option: order SENSEEDGE003 and MOD004 (failsafe sensing edge circuit)



800-361-2260 • manaras.com

Specifications and design modifications subject to change without prior notice. AC.2023.01.01.R1
For additional information, availability or additional accessories not listed, please consult inside sales.

Electric Sensing Edges

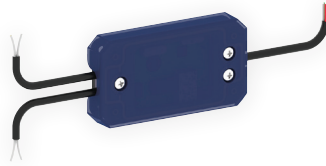
Components and Accessories

INTERFACE 002



- Interface module
- For 10 kΩ sensing edge, designed to ensure compatibility with Manaras electronic controls
- UL325 Recognized Component
- Interior use
- Nema 4 enclosure
- Materials: ABS/epoxy potting (module), galvanized steel (junction box)
- Operation Temperature: -35°C to 70°C (-31°F to 158°F)
- Dim. Module: 1.8"W x 1.25"H x 0.8"D
- Dim. Jbox: 4"W x 2"H x 1.5"D
- Includes: Interface module unit, junction box, cover
- To be used with: SENSEEDGE007UM, SENSEEDGE018UM, SENSEEDGE044UM, SENSEEDGE046M

INTERFACE 003



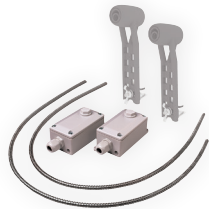
- Interface module
- Used to merge two monitored devices on the same monitored input on the ECB
- Interior/exterior use
- Nema 4 enclosure
- Materials: ABS/PA6 30% GF/TPE
- Operation Temperature: -25°C to 75°C (-13°F to 167°F)
- Power Supply: 24 V_{AC}/V_{DC}, 15 mA
- Dimensions: 1.5"W x 3"H x 0.5"D
- Includes: Interface module
- Compatible with: LIGHTCURTAIN001, LIGHTCURTAIN002, PHOTO045M, PHOTO061/061A, PHOTO065, PHOTO067A, PHOTO068C, PHOTO068D, PHOTO070, SENSEEDGE007UM, SENSEEDGE018UM, SENSEEDGE042, SENSEEDGE044UM, SENSEEDGE046M

SENSLINK 002



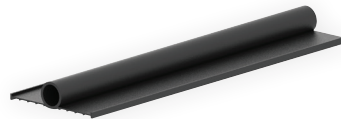
- Monitored electric sensing edge wireless link kit
- Provides wireless signal transmitter from a monitored electric sensing edge to the operator
- UL325 Recognized Component
- Nema 4 enclosure (Tx)
- Housing Material: Polycarbonate (Tx), steel (Rx)
- Operation Temperature: -40°C to 60°C (-40°F to 140°F)
- Dimensions (Tx): 4.62"W x 1.75"H x 1.75"D
- Dimensions (Rx): 4"W x 4.75"H x 1"D
- Electrical Rating: 2AA, 1.5V lithium (Tx), 12 to 24V_{AC}/V_{DC} (Rx)
- Includes: Transmitter, receiver, antenna (not shown)
- To be used with: SENSEEDGE007UM, SENSEEDGE018UM, SENSEEDGE044UM

CONNECTSET 001



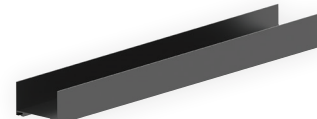
- Junction box and connection set for photoelectric cell installation applications which require all wiring to be done in a conduit
- Includes: Fittings to cover both sides of the door; flexible stainless steel conduit (3"W x 3/16"Ø) (x2), junction box (x2), wire nuts
- Not included: Photoelectric cells
- Compatible with: PHOTO061/061A, SENSEEDGE042, etc.

HOSE 010



- Air hose with rubber profile for pneumatic edge to be built in the field
- Materials: Soft rubber
- Section: 0.75" inside Ø/1" outside Ø + 2 edges to be inserted in mounting channel
- Compatible with: AIRSWITCH016A, PNEUMATIC021A, SENSEEDGE042

SENSEMOUNT 001A/B/C



- Mounting channel
- Applications: SENSEEDGE044UM, SENSEEDGE044U
- Industry Codification: ME-123-C, ME-123-C3, ME-123-C7
- Channel Shape: "C", "L", flat
- Vertical or horizontal mount
- Dimensions A ("C" shape): 2.0"W x 1.25"H
- Dimensions B ("L" shape): 2.0"W x 1.25"H
- Dimensions C (flat): 3.5"W x 0.25"H
- Other shapes available upon request
- Sold per inch, made-to-order lengths, no returns or exchanges

Electric Sensing Edges

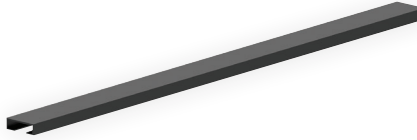
Components and Accessories

SENSEMOUNT 003A/B/C



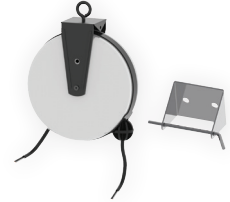
- Mounting channel
- Applications: SENSEEDGE007UM, SENSEEDGE007U
- Industry Codification: ME-113-C, ME-113-C3, ME-113-C7
- Channel Shape: "C", "L", flat
- Vertical or horizontal mount
- Dimensions A ("C" shape): 1.5" W x 1.25" H
- Dimensions B ("L" shape): 1.5" W x 1.25" H
- Dimensions C (flat): 1.5" W x 0.25" H
- Other shapes available upon request
- Sold per foot, made-to-order lengths, no returns or exchanges

SENSEMOUNT 004



- Mounting channel
- Applications: SENSEEDGE002
- Industry Codification: ME-110-C
- Channel Shape: "C"
- Vertical or horizontal mount
- Dimensions: 0.88" W x 0.25" H with 0.31" gap
- Other shapes available upon request
- Sold per foot, made-to-order lengths, no returns or exchanges

REELITE 005



- Metal take-up reel
- Cables: 2-wire
- 18 gauge
- Max. Cord Extension: 20'
- Includes: Take-up reel, hanging bracket

REELITE 003



- Metal take-up reel
- Cables: 3-wire
- 16 gauge
- Max. Cord Extension: 30'
- Includes: Take-up reel, hanging bracket

COIL 014



- Curly coil cord
- Cables: 2-wire
- 18 gauge
- Max. Cord Extension: 12'
- For 20' extension order: COIL001

COIL 001

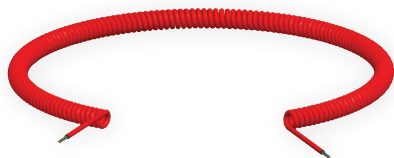


- Curly coil cord
- Cables: 2-wire
- 18 gauge
- Max. Cord Extension: 20'
- For 12' max. extension order: COIL014

Electric Sensing Edges

Components and Accessories

COIL 003



- Curly coil cord
- Cables: 4-wire
- 18 gauge
- Max. Cord Extension: 20'
- Color: Red-orange
- For 25' max. extension (black only) order: COIL010

COIL 010



- Curly coil cord
- Cables: 4-wire
- 18 gauge
- Max. Cord Extension: 25'
- Color: Black
- For 20' max. extension (red-orange) order: COIL003

COIL 007



- Curly coil cord
- Cables: 3-wire
- 18 gauge
- Max. Cord Extension: 20'
- Color: Red-orange