

Modifications List

The following chart provides a list of modifications which are available. For more details about these modifications, please refer to the following pages.

Note: Pricing is valid for only one modification/operator and when the modification is purchased in conjunction with the operator. If more than one modification is required on the same operator, please consult inside sales for compatibility and price.

- ★ Standard feature with **BOARD 070M**
- ✓ Standard feature
- Available feature
- Note (see page 63 for note descriptions)
- Ⓜ Monitored Electronic Control Type
- ⓪ Electromechanical (Hardwired) Type
- ⓘ Consult inside sales

Description	Code	Control Type	Page	OMJ/OMH	OPJ	OPH	OHJ	OSH	MSJ	OGH	MGH/MRGH	OMT	OTH	OTH-A.00	OTBH	OTBH-A.00	OTBH-A.05	MGT	OSL	MGSL	RSH/RVH/RMSJ	RTBH	OTH-A.06	OTBH-A.06
B2 operating mode	MOD001	Ⓜ/0	64	★	★	★	★	★	★	★	★	★	★	★	★	★	★	★	★	★	★	★	★	★
D1 operating mode	MOD002	Ⓜ/0	64	★	★	★	★	★	★	★	★	★	★	★	★	★	★	★	★	★	★	★	★	★
Delay on reverse	MOD003	Ⓜ	64	★	★	★	★	★	★	★	★	★	★	★	★	★	★	★	★	★	★	★	★	★
Delay on reverse, H-D	MOD003	0	64	●	●	●	●	●	●	●	●	●	●	●	●	●	●	●	●	●	●	●	●	●
Delay on reverse, M-D	MOD003A	0	64	●								●												
Fail safe sens. edge circuit	MOD004	0	64	●	●	●	●	●	●	●	●	●	●	●	●	●	●	●	●	●	●	●	●	●
Mid-stop	MOD005	Ⓜ	64	★	★	★	★	★	★	★	★	★	★	★	★	★	★	★	★	★	★	8	★	★
Reverse limits	MOD007	Ⓜ/0	64	●	●	●	●	●	●	●	●	●	●	●	●	●	●	●	●	●	●	●	●	●
Double limit switches	MOD008	Ⓜ/0	64	●	●	●	●	●	●	●	●	●	●	●	●	●	●	●	●	●	●	●	●	●
Auxiliary contact block	MOD009	0	64		●	●	●	●	●	●	●		●	●	●	●	●	●	●	●	●			1
Two door interlock	MOD010	Ⓜ/0	65	●	●	●	●	●	●	●	●	●	●	●	●	●	●	●	●	●	●	●	●	●
Long dist. control wiring	MOD011	0	65		●	●	●	●	●	●	●		●	●	●	●	●	●	●	●	●			
Non-resettable counter, inside	MOD012	0	65		●	●	●	●	●	●	●		●	●	●	●	●	●	●	●	●			
Non-resettable counter, inside	MOD012B	Ⓜ	65	●	●	●	●	●	●	●	●	●	●	●	●	●	●	●	●	●	●	✓	✓	●
Timer to close (TTC)	MOD013	Ⓜ	65	★	★	★	★	★	★	★	★	★	★	★	★	★	★	★	★	★	★	★	★	★
Timer to close (TTC), H-D	MOD013	0	65		●	●	●	●	●	●	●		●	●	●	●	●	●	●	●	●			
Timer to close (TTC), M-D	MOD013A	0	65	●								●												
TTC for warning lights	MOD014	0	65		●	●	●	●	●	●	●		●	●	●	●	●	●	●	●	●			
TTC from Mid-Stop	MOD015	Ⓜ	65	★	★	★	★	★	★	★	★	★	★	★	★	★	★	★	★	★	★	8	★	★
Wiring for traffic lights	MOD016A	0	66		●	●	●	●	●	●	●		●	●	●	●	●	●	●	●	●			
Wiring for traffic lights	MOD016B	Ⓜ	66		●	●	●	●	●	●	●		●	●	●	●	●	●	●	●	●	●	●	●
Maximum run timer	MOD017	Ⓜ	66	★	★	★	★	★	★	★	★	★	★	★	★	★	★	★	★	★	★	★	★	★
Maximum run timer	MOD017A	0	66		●	●	●	●	●	●	●		●	●	●	●	●	●	●	●	●			
Control circuit 120V/1Ph	MOD019A	0	66		●	●	●	●	●	●	●		●	●	●	●	●	●	●	●	●			
Control circuit > 120V/1Ph	MOD019B-E	0	66		●	●	●	●	●	●	●		●	●	●	●	●	●	●	●	●			
Safepack, 24V	MOD021A	0	66		ⓘ	ⓘ	ⓘ	ⓘ	ⓘ	●	●		ⓘ		ⓘ				ⓘ	ⓘ	●			
Univ. aux. output module	MOD027B	Ⓜ	66		●	●	●	●	●	●	●		●	●	●	●	●	●	●	●	●	●	●	●
N1 to N4X M-photo upgrade	MOD035	Ⓜ	67	●	●	●	●	●	●	●	●	●	●	●	●	●	●	●	●	●	●	✓	✓	✓
N1 to N4X Refl. M-photo	MOD038	Ⓜ	67	●	●	●	●	●	●	●	●	●	●	●	●	●	●	●	●	●	●			
N4X to N4X Refl. M-photo	MOD040	Ⓜ	67																			●	●	●
Wireless air switch receiver	MOD084	Ⓜ	67	●	●	●	●	●	●	●	●	●	●	●	●	●	●	●	●	●	●	●	●	●
Y-Connector merging module	MOD086	Ⓜ	67	●	●	●	●	●	●	●	●	●	●	●	●	●	●	●	●	●	●	●	●	●
Double limit switches 4 positions	MOD155	Ⓜ	67	●	●	●	●	●	●	●	●	●	●	●	●	●	●	●	●	●	●	●	●	●
Wiring for LED light strip	MOD168A	Ⓜ	67	●	●	●	●	●	●	●	●	●	●	●	●	●	●	●	●	●	●	●	●	●



Modifications List

- 1 Available in conjunction with MOD110
- 2 Available only with 1/2HP operators
- 3 Hoist on left, please consult inside sales
- 4 Available only with 1/2HP-2HP operators ; standard with MGH 2HP/3HP and MRGH
- 5 Available only with operators above 1/2HP
- 6 Standard with Silencio® OTBH-A.06
- 7 Available only on N4/12 (W) and/or N4X (C) type operators (pages 54-57)
- 8 Available only with RSH, RMSJ

Description	Code	Control Type	Page	OMJ/OMH	OPJ	OPH	OHJ	OSH	MSJ	OGH	MGH/MRGH	OMT	OTH	OTH-A.00	OTBH	OTBH-A.00	OTBH-A.05	MGT	OSL	MGSL	RSH/RVH/RMSJ	RTBH	OTH-A.06	OTBH-A.06
Friction clutch, #50 chain	MOD050	Ⓜ/0	68							●	●													
Friction clutch, #60 chain	MOD051	Ⓜ/0	68							●	●													
Double 4L V-belt	MOD055	Ⓜ/0	68										●		●									
Double Ax cogged V-belt	MOD055A	Ⓜ/0	68										●		●	●								
Aux. trolley, #41 chain	MOD060	Ⓜ/0	68		●	●	●	●	●	●	●													
Dual aux. trolley, #41 chain	MOD061	Ⓜ/0	68		●	●	●	●	●	●	●													
Dual trolley drive, #48 chain	MOD062	Ⓜ/0	68										2		2									
Dual trolley drive, #41 chain	MOD063	Ⓜ/0	69										5	●	5	●	●	●					●	
Trolley hoist, #48 chain	MOD064B	Ⓜ/0	69									●	2		2									
Trolley hoist, #41 chain	MOD065B	Ⓜ/0	69										5	●	5	●	●						●	●
Chain hoist	MOD066	Ⓜ/0	69	●	●								●	●	●	●	●	●						●
Chain Hoist, N4/12-4X Chain	MOD066WC	Ⓜ/0	69	●	●								●	●	●	●	●	●						●
P.B. bearings, output, Opera	MOD068	Ⓜ/0	69		●	●	●	✓	✓													✓		
P.B. bearings, input, trolley	MOD069	Ⓜ/0	69										●	✓	●	✓	✓		●		✓	✓	✓	
P.B. bearings, output, trolley	MOD072	Ⓜ/0	70										●	●	●	●	✓	●	●	●		✓	✓	
Front idler, heavy-duty	MOD073	Ⓜ/0	70										●	●	●	●	●	●	●					
Hand crank, 4'/6.5'	MOD074A/B	Ⓜ/0	70	i	i	i	i	i	i	●	●													
Minimum depth mounting	MOD078	Ⓜ/0	70										●	●	●	●	●						●	
Minimum depth mounting	MOD078A	Ⓜ/0	70																					●
Contactoer ECB driven	MOD110	Ⓜ/0	70		●	●	●	●	●	●	●		●	●	●	●	●	●	●	●				●
Solenoid brake option	MOD111	Ⓜ/0	70		●																			
Limit shaft speed-up	MOD112	Ⓜ/0	70	●	●	●	●	●	●	●														
Drum brake option, apart.	MOD113	Ⓜ/0	70												●	●	✓							6
Subframe reinforcement (≥3HP)	MOD119	Ⓜ/0	70								●													
Solenoid anti-vibration	MOD121A	Ⓜ/0	70					●	●						●	●	✓		●					6
Motor anti-vibration mount	MOD121B	Ⓜ/0	70	●	●	●	●	●	●										●					✓
Trolley slow-down option	MOD124	Ⓜ/0	71										●	●	●	●	●	●	●					
Limit speed-up kit, #41 chain	MOD125	Ⓜ/0	71								●													
Limit chain on left	MOD126A	Ⓜ/0	71	i	●	i	i	i	i	i	i													
Limit chain on right	MOD126B	Ⓜ/0	71	i	✓	i	i	i	i	i	i													
Cogged V-belt upgrade	MOD130	Ⓜ/0	71					●	●				●	●	●	●	✓		●			✓	✓	
Drive chain guard	MOD141A	Ⓜ/0	71																●		●			
Horizontal mounting	MOD158	Ⓜ/0	71							●														
Centermount	MOD164A	Ⓜ/0	71		●																			
Centermount disc. cable 35'	MOD165	Ⓜ/0	71		●																			
In-line friction clutch (1/2 - 2HP)	MOD172A	Ⓜ/0	71							●	●								✓		✓			
In-line friction clutch (≥ 3HP)	MOD172B	Ⓜ/0	71							●									✓		✓			
TEFC motor upgrade	MOD080	Ⓜ/0	72		●	3		3	3	●	4		●	●	●	●	●	●	●	●	●			✓
Synthetic oil upgrade	MOD114	Ⓜ/0	72							●	●								●		●			
Bird nest protection	MOD148	Ⓜ/0	72										●		●				●				●	●
Heater in reducer	MOD161	Ⓜ/0	72							7	7								7		7			
Heater in control encl.	MOD162	Ⓜ/0	72		7	7	7	7	7	7	7		7	7	7	7	7	7	7	7	7	7	7	7
Heater in reducer, control encl.	MOD163	Ⓜ/0	73							7	7								7		7			



Environmental Modifications

The following modifications are designed for special types of applications or provide you with additional protective features.

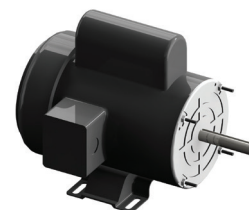
Please refer to the summary table (pages 62-63) to verify the availability of a specific modification for a specific operator model.

Note: Pricing is valid for only one modification/operator and when the modification is purchased in conjunction with the operator. If more than one modification is required on the same operator, please consult inside sales for compatibility and price.

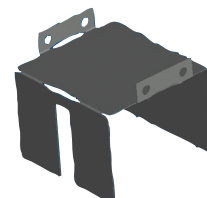
For operator's designated for damp environment, corrosive environment and/or hazardous locations, please consult (pages 54-59).

Please consult inside sales for additional modifications

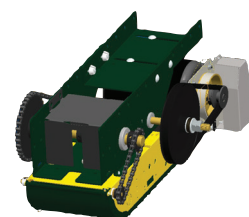
Code	Description
MOD080	<p>TEFC Motor Upgrade Totally-enclosed, fan-cooled motor (TEFC) replaces the standard open drip proof motor (ODP). For applications where the operator is installed in arduous conditions: dirt, high humidity rating, etc. Note: For OPH/OSH/MSJ with hoist on left, please consult inside sales. Applies to: OPJ/OPH/OSH/MSJ/OGH/OTH/OTH-A.00/OTBH/OTBH-A.00/OTBH-A.05/MGT/OSL/MGSL/MGH up to 2HP. Standard on MGH 2HP/3HP, MRGH, OTH-A.06/OTBH-A.06.</p>
MOD114	<p>Synthetic Oil Upgrade Synthetic oil is placed in the operator's reducer for improved performance stability and decreased sensitivity to temperature variances. Applies to: OGH/MGH/MRGH/MGT/MGSL/RGH and these models for Nema 4/12, Nema 4X and Nema 7/9 environmental applications.</p>
MOD148	<p>Bird Nest Protection A guard is installed over the internal reduction system in order to prevent birds from nesting. The installation of the guard is ideal for the agricultural industry where birds may sometimes be a nuisance. The guard helps reduce bird waste and prevents potential damage to the operator, therefore reducing the maintenance, repairs and spare parts replacement costs. It also increases the life time of the operator without harming the birds. Also available as a modification kit (MODKIT148) for in the field upgrades, see (page 87). Applies to: OTH/OTBH/OSL/RTBH/OTH-A.06/OTBH-A.06.</p>
MOD161	<p>Heater in Reducer Screw-in 15W 24V_{AC} reducer heater provides warming of reducer oil in cold temperature applications to allow ideal operator working conditions . This modification includes a pre-set compact thermostat mounted in the motor junction box. 50VA transformer is included for the controls and heater. Synthetic oil modification (MOD114 \$) required with this option. Applies to: OGH/MGH/MRGH/MGT/MGSL operators with Nema 4/12 or Nema 4X environmental modifications.</p>
MOD162	<p>Heater in Control Enclosure A 30W 24V_{AC} control box heater is supplied to ensure functionality of the controls and prevent condensation in the control box in cold temperature applications. This modification includes a pre-set compact thermostat mounted in the motor junction box. 50VA transformer is included for the heater. Applies to: OPJ/OPH/OSH/MSJ/OGH/MGH/MRGH/OTH/OTH-A.00/OTBH/OTBH-A.00/OTBH-A.05/MGT/OSL/MGSL/RSH/RVH/RTBH with Nema 4/12 or Nema 4X environmental modifications.</p>



TEFC motor



Bird nest protection guard



Typical bird nest application

Environmental Modifications

Code	Description
MOD163	Heater in Reducer & Control Enclosure Screw-in 15W 24VAC reducer heater provides warming of reducer oil in cold temperature applications to allow ideal operator working conditions. A 30W 24V control box heater is supplied to ensure functionality of the controls and prevent condensation. This modification includes a pre-set compact thermostat mounted in the motor junction box. 50VA transformer is included for the heater. Synthetic oil modification (MOD114 \$) required with this option. Applies to: OGH/MGH/MRGH/MGT/MGSL operators with Nema 4/12 or Nema 4X environmental modifications.

