

Interface Modules

INTERFACE 001



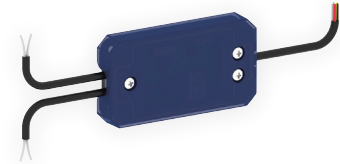
- Interface module
- Enables the connection of monitored photoelectric cells to an electronic/electromechanical control without monitoring function
- Interior use
- Nema 1 enclosure
- Materials: Plastic
- Operation Temperature: -30°C to 70°C (-22°F to 158°F)
- Power Supply: 24 Vac/Vdc
- Dimensions: 2.62"W x 4.75"H x 1.34"D
- Includes: Interface module
- Compatible with: PHOTO061, PHOTO065, PHOTO070
- Used in: PHOTO008 series

INTERFACE 002



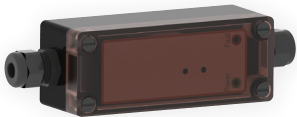
- Interface module
- For 10 kΩ sensing edge, designed to ensure compatibility with Manaras electronic controls
- UL325 Recognized Component
- Interior use
- Nema 4 enclosure
- Materials: ABS/epoxy potting (module), galvanized steel (junction box)
- Operation Temperature: -35°C to 70°C (-31°F to 158°F)
- Dim. Module: 1.8"W x 1.25"H x 0.8"D
- Dim. Jbox: 4"W x 2"H x 1.5"D
- Includes: Interface module unit, junction box, cover
- To be used with: SENSEGE007UM, SENSEGE018UM, SENSEGE044UM, SENSEGE046M

INTERFACE 003



- Interface module
- Used to merge two monitored devices on the same monitored input on the ECB
- Interior/exterior use
- Nema 4 enclosure
- Materials: ABS/PA6 30% GF/TPE
- Operation Temperature: -25°C to 75°C (-13°F to 167°F)
- Power Supply: 24 Vac/Vdc, 15mA
- Dimensions: 1.5"W x 3"H x 0.5"D
- Includes: Interface module
- Compatible with: LIGHTCURTAIN001, LIGHTCURTAIN002, PHOTO045M, PHOTO061/061A, PHOTO065, PHOTO067A, PHOTO068C, PHOTO068D, PHOTO070, SENSEGE007UM, SENSEGE018UM, SENSEGE042, SENSEGE044UM, SENSEGE046M

INTERFACE 005



- Interface module
- Controller for non-contact opto sensing edges and light curtains
- UL325 Recognized Component
- Interior/exterior use
- Nema 4 enclosure
- Materials: Polycarbonate
- Operation Temperature: -18°C to 55°C (-0°F to 131°F)
- Power Supply: 12 to 24 Vac/Vdc, 50 mA
- Dimensions: 6.63"W x 1.75"H x 1.75"D
- Includes: Interface module, hardware
- Included with: PHOTO067, PHOTO068A/B, LIGHTCURTAIN003, LIGHTCURTAIN004