

# Key Switch Control Stations

## Surface Mount and Post Mount

### KEYSWITCH 015



- Surface mount
- Function: Open/close/stop with automatic return to stop position
- 2 SPDT NO and NC (open/close) contacts
- Tamper-proof
- Interior/exterior use
- Nema 3R, 4, 12 enclosure
- Materials: Aluminum die-cast enclosure and face plate
- Operation Temperature: -18°C to 66°C (0°F to 150°F)
- Dimensions: 4.2"W x 4.4"H x 2.8"D (without key)
- Includes: Key switch, 2 keys
- Key switches without a stop button should only be used with operators wired for constant-pressure-to-open/close (D1 operating mode)

### KEYSWITCH 017



- Surface mount
- Locking feature
- 1 SPDT NO and NC contact
- 2 stable positions
- Interior/exterior use
- Nema 3R, 4, 12 enclosure
- Materials: Aluminum die-cast enclosure and face plate
- Operation Temperature: -18°C to 66°C (0°F to 150°F)
- Dimensions: 4.2"W x 4.4"H x 2.8"D (without key)
- Includes: Key switch, 2 keys

### KEYSWITCH 050



- Surface mount
- Locking feature
- 1 SPDT NO contact
- 2 stable positions
- Interior/exterior use
- Nema 4/12 and 4X enclosure
- Materials: Polycarbonate
- Operation Temperature: -25°C to 70°C (-13°F to 158°F)
- Dimensions: 2.68"W x 2.68"H x 3.35"D (without key)
- Includes: Key switch, 2 keys
- Additional NO or NC contacts: order PUSH148, PUSH149
- Replacement keys: order KEY006

### KEYSWITCH 051



- Surface mount
- Locking feature
- 1 NO and 1 NC contacts
- Class I, Div. 1 and 2, Groups C, D Class I, Zones 1 and 2, Groups IIB, IIA Class II, Div. 1 and 2, Groups E, F, G Class III, Nema 7 (C, D) / 9 (E, F, G) for classified hazardous locations
- CSA certified / UL listed
- Materials: Aluminum die-cast
- Operation Temperature: -50°C to 40°C (-58°F to 104°F)
- Dimensions: 3"W x 6.13"H x 5.08"D (without key)
- Includes: Key switch, 2 keys
- Key switches without a stop button should only be used with operators wired for constant-pressure-to-open/close (D1 operating mode)

### KEYSWITCH 019



- Surface mount
- Function: Open/close/stop with automatic return to stop position + stop button
- 2 SPDT NO and NC (open/close) contacts, 1 NC contact (stop)
- Tamper-proof
- Interior/exterior use
- Nema 3R, 4, 12 enclosure
- Materials: Aluminum die-cast enclosure and face plate
- Operation Temperature: -18°C to 66°C (0°F to 150°F)
- Dimensions: 4.2"W x 4.4"H x 3.25"D (without key)
- Includes: Key switch, 2 keys

### KEYSWITCH 034



- Wall, surface or pedestal mount
- Locking feature
- 1 SPDT NO contact
- Tamper-proof
- Interior/exterior use
- Materials: Aluminum die-cast
- Dimensions: 2.75"W x 4.5"H x 2"D (without key)
- Includes: Key switch, 2 keys
- Key switches without a stop button should only be used with operators wired for constant-pressure-to-open/close (D1 operating mode)
- Replacement parts: order KEYSWITCH006, KEYSWITCH023, KEYSWITCH041

# Key Switch Control Stations

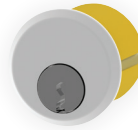
## Flush Mount, Components and Accessories

### KEYSWITCH 010



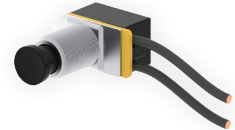
- Flush mount
- Function: Open/close/stop with automatic return to stop position
- 2 SPDT NO and NC (open/close) contacts
- Tamper-proof
- Interior use
- Nema 1 enclosure
- Materials: Steel enclosure
- Operation Temperature: -18°C to 66°C (0°F to 150°F)
- Dimensions: 4.75"W x 6"H x 3"D (without key)
- Includes: Key switch, mounting screws, 2 keys
- Key switches without a stop button should only be used with operators wired for constant-pressure-to-open/close (D1 operating mode)

### KEYSWITCH 006



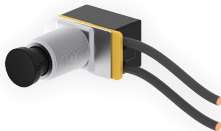
- Replacement cylinder
- Includes: Replacement cylinder, 2 keys
- Compatible with: KEYSWITCH034

### KEYSWITCH 023



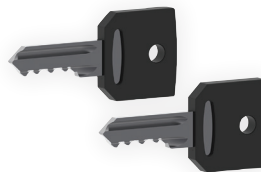
- Replacement switch
- 1 SPST momentary NO contact
- Compatible with: KEYSWITCH034

### KEYSWITCH 041



- Replacement switch
- 1 SPST momentary NC contact
- Compatible with: KEYSWITCH034

### KEY 006



- Replacement keys (2x)
- Compatible with: STATION079, STATION080, KEYSWITCH050