

# Keypads and Card Readers

## Components and Accessories

### KEYLESS 042



- Hand held or wall mount
- Rolling code technology
- Twelve-button digital keypad
- 1-4 doors (MD)
- Function: Open/close/stop (configurable on operators equipped with an ECB) or open/close
- Environment: Nema 1 with weather-proof cover
- Range: 100' (approx.)
- Dimensions: 2.2" W x 4.6" H x 0.12" D
- Battery: 1x AAA (1.5V)
- Includes: Digital keypad, battery, mounting screws
- For compatible receivers: order RADIORE901, RADIORE901A, RADIORE901B, RADIOKIT004 (BOARD070), RADIORE102

### CARDREADER 017



- Waterproof card reader/digital keypad
- Installation: Close proximity to the door, wall or post mount
- Operation Temperature: -25°C to 60°C (-13°F to 140°F)
- Range: 3 to 8 cm
- Dimensions: 2.2" W x 4.74" H x 0.71" D
- Power Supply: 24 Vdc
- Includes: Card reader/digital keypad
- Compatible with: POWERBLOCK006, POWERBLOCK012 (to be factory installed in Opera control box, order MOD149 (Nema 1)/MOD149A (Nema 4))
- For access card: order CARDREADER018

### POST 001



- Gooseneck post 90°
- Installation: Close proximity to the door
- Surface-mounted card reader/digital keypad
- Materials: Steel
- Dimensions (post): 42" H
- Dimensions (faceplate): 4" W x 4" H
- Dimensions (baseplate): 5.69" W x 5.69" H
- Compatible with: CARDREADER017

### CARDREADER 018



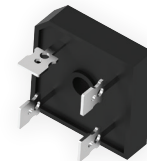
- Reinforced access card
- Swipe in front of card reader
- Dimensions: 3.4" W x 1.2" H x 0.1" D
- Compatible with: CARDREADER017

### POWERBLOCK 006



- Single output industrial power supply
- Installation: DIN rail mount, inside operator control box or separate control panel
- Power Supply: 110 to 240 VAc
- Output Specifications: 24 Vdc, 1 A, 20 W
- UL 508, NEC class 2/LPS compliant
- Operation Temperature: -20°C to 70°C (-4°F to 158°F)
- Dimensions: 0.88" W x 3.54" H x 3.93" D
- Compatible with: CARDREADER017, for inclusion in Opera control box, order: MOD149 (Nema 1), MOD149A (Nema 4)

### RECTIFIER 011



- Rectifier
- Power Supply: 24 VAc
- Output Capacity: 24 Vdc, 35 A max.
- To be placed inside operator control box or separate control panel
- Centerhole mounting (#10 screw max.)
- Dimensions: 1.125" W x 1.125" H x 0.79" D
- Tab Terminals: 4 x 0.25"
- Operation Temperature: -55°C to 150°C (-67°F to 302°F)
- Includes: Rectifier (without wire leads)



800-361-2260 • manaras.com

Specifications and design modifications subject to change without prior notice. AC.2023.01.01.R1  
For additional information, availability or additional accessories not listed, please consult inside sales.