

# Light Curtains

## Monitored and Non-Monitored Light Curtains, Components and Accessories

### LIGHTCURTAIN 001



- Monitored
- UL325 Recognized Component
- Type: Thru-beam
- Range: 32' (approx.)
- Detection Height: 36"
- Interior/exterior use
- IP67 enclosure
- Materials: Black PVC, aluminum
- Operation Temperature: -40°C to 60°C (-40°F to 140°F)
- Power Supply: 12 to 24 V<sub>AC</sub>/V<sub>DC</sub>, 100 mA max. at 24 V<sub>DC</sub>
- Dimensions: 1.13"W x 38"H x 1"D
- Detection Angle: Tx: +/- 10°, Rx: +/- 20°
- Includes: Transmitter, receiver, 3' of connection wire, mounting brackets
- Compatible with: INTERFACE003
- For non-monitored function: order LIGHTCURTAIN003

### LIGHTCURTAIN 002



- Monitored
- UL325 Recognized Component
- Type: Thru-beam
- Range: 32' (approx.)
- Detection Height: 72"
- Interior/exterior use
- IP67 enclosure
- Materials: Black PVC, aluminum
- Operation Temperature: -40°C to 60°C (-40°F to 140°F)
- Power Supply: 12 to 24 V<sub>AC</sub>/V<sub>DC</sub>, 100 mA max. at 24 V<sub>DC</sub>
- Dimensions: 1.13"W x 74"H x 1"D
- Detection Angle: Tx: +/- 10°, Rx: +/- 20°
- Includes: Transmitter, receiver, 3' of connection wire, mounting brackets
- Compatible with: INTERFACE003
- For non-monitored function: order LIGHTCURTAIN004

### LIGHTCURTAIN 003



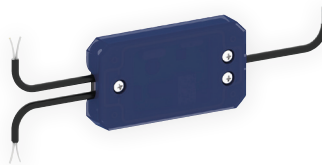
- Non-monitored
- UL325 Recognized Component
- Type: Thru-beam
- Range: 32' (approx.)
- Detection Height: 36"
- Interior/exterior use
- IP67 enclosure
- Materials: Black PVC, aluminum
- Operation Temperature: -40°C to 60°C (-40°F to 140°F)
- Power Supply: 12 to 24 V<sub>AC</sub>/V<sub>DC</sub>, 100 mA max. at 24 V<sub>DC</sub>
- Dimensions: 1.13"W x 38"H x 1"D
- Detection Angle: Tx: +/- 10°, Rx: +/- 20°
- Includes: Transmitter, receiver, 3' of connection wire, mounting brackets, INTERFACE005
- For monitored function: order LIGHTCURTAIN001

### LIGHTCURTAIN 004



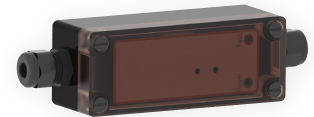
- Non-monitored
- UL325 Recognized Component
- Type: Thru-beam
- Range: 32' (approx.)
- Detection Height: 72"
- Interior/exterior use
- IP67 enclosure
- Materials: Black PVC, aluminum
- Operation Temperature: -40°C to 60°C (-40°F to 140°F)
- Power Supply: 12 to 24 V<sub>AC</sub>/V<sub>DC</sub>, 100 mA max. at 24 V<sub>DC</sub>
- Dimensions: 1.13"W x 74"H x 1"D
- Detection Angle: Tx: +/- 10°, Rx: +/- 20°
- Includes: Transmitter, receiver, 3' of connection wire, mounting brackets, INTERFACE005
- For monitored function: order LIGHTCURTAIN002

### INTERFACE 003



- Interface module
- Used to merge two monitored devices on the same monitored input on the ECB
- Interior/exterior use
- Nema 4 enclosure
- Materials: ABS/PA6 30% GF/TPE
- Operation Temperature: -25°C to 75°C (-13°F to 167°F)
- Power Supply: 24 V<sub>AC</sub>/V<sub>DC</sub>, 15 mA
- Dimensions: 1.5"W x 3"H x 0.5"D
- Includes: Interface module
- Compatible with: LIGHTCURTAIN001, LIGHTCURTAIN002, PHOTO045M, PHOTO061/061A, PHOTO065, PHOTO067A, PHOTO068C, PHOTO068D, PHOTO070, SENSEEDGE007UM, SENSEEDGE018UM, SENSEEDGE042, SENSEEDGE044UM, SENSEEDGE046M

### INTERFACE 005



- Interface module
- Controller for non-contact opto sensing edges and light curtains
- UL325 Recognized Component
- Interior/exterior use
- Nema 4 enclosure
- Materials: Polycarbonate
- Operation Temperature: -18°C to 55°C (-0°F to 131°F)
- Power Supply: 12 to 24 V<sub>AC</sub>/V<sub>DC</sub>, 50 mA
- Dimensions: 6.63"W x 1.75"H x 1.75"D
- Includes: Interface module, hardware
- Included with: PHOTO067, PHOTO068A/B, LIGHTCURTAIN003, LIGHTCURTAIN004



800-361-2260 • manaras.com

Specifications and design modifications subject to change without prior notice. AC.2023.01.01.R1  
For additional information, availability or additional accessories not listed, please consult inside sales.