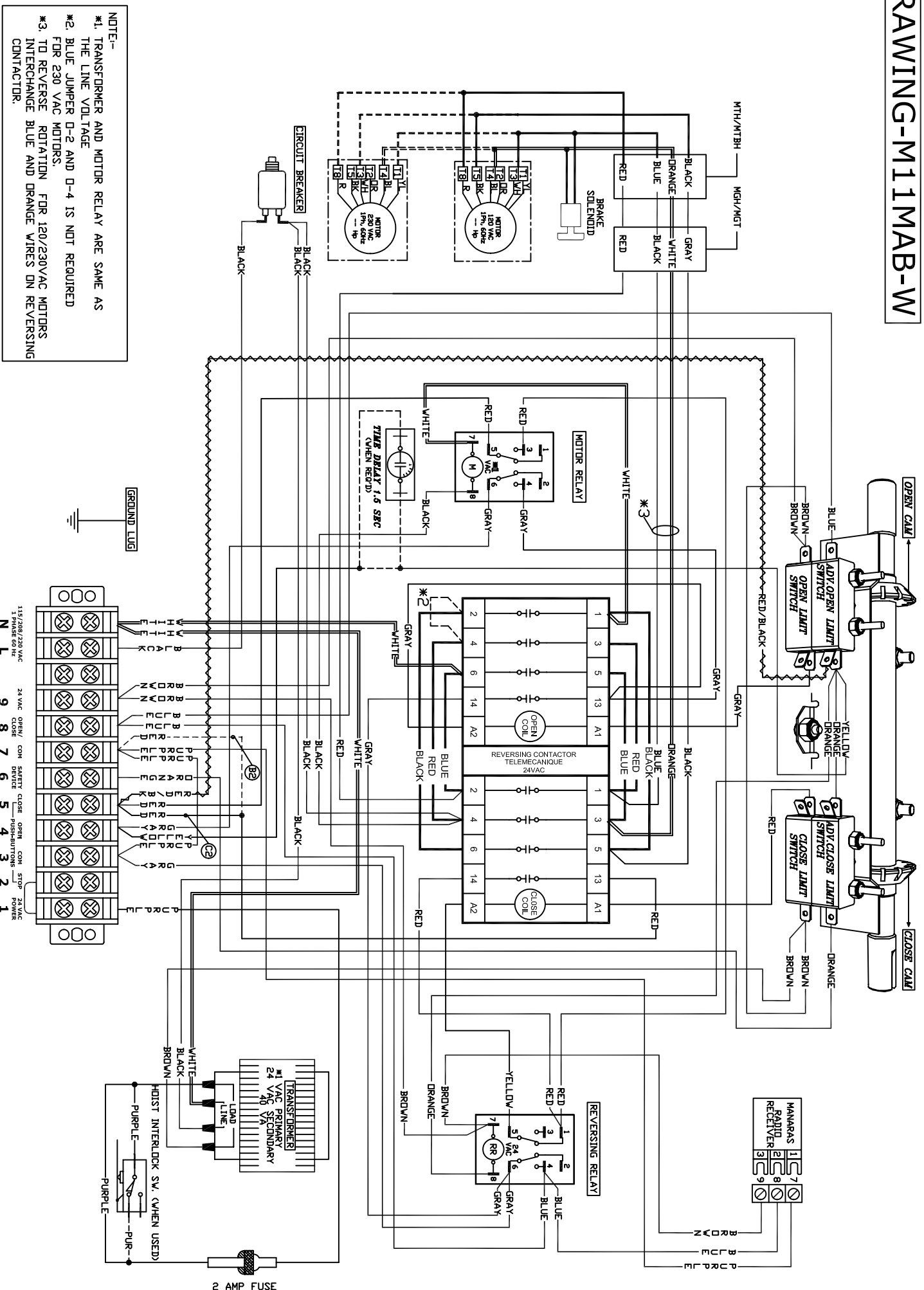


DRAWING-M11MAB-W



NOTE:-
 *1. TRANSFORMER AND MOTOR RELAY ARE SAME AS THE LINE VOLTAGE
 *2. BLUE JUMPER D-2 AND D-4 IS NOT REQUIRED FOR 230 VAC MOTORS.
 *3. TO REVERSE ROTATION FOR 120/230VAC MOTORS INTERCHANGE BLUE AND ORANGE WIRES ON REVERSING CONTACTOR.

LINE POWER	24 VAC POWER	EXTERNAL INTERLOCK	SAFETY REVERSE	OPEN/CLOSE COMMAND	PUSH-BUTTON STATION	TWO PUSH-BUTTON STATION	RADIO CONTROL
L N	1 9	1 2	3 6	7 8	2 3 4 5	2 3 4 5	7 8 9
POWER SUPPLY 115/208/220 VAC 1 Ph, 60 Hz.	24 VAC POWER AVAILABLE 10VA MAX.	FACTORY INSTALLED JUMPER REMOVE IF EXT. INTERLOCK IS USED.	CONTACT FOR SAFETY EDGE/SAFETY DEVICE	CONTACT FOR OPEN/CLOSE DEVICE.	NOTE-- PLACE A JUMPER BETWEEN TERMINAL 2 AND TERMINAL 3. IF STOP BUTTON IS NOT USED.		RADIO RECEIVER

ATTENTION- USE 18AWG OR HIGHER FOR WIRING ALL EXTERNAL CONNECTIONS

1 ON SITE MODIFICATIONS

- NOTE-(C2)/(B2)
 C2 ⇄ B2
 B2 ⇄ C2
- 1A REMOVE THE RED WIRE WITH RAPID CONNECTOR FROM TERMINAL #5, AND TRANSFER IT TO TERMINAL #7.
- 1B REMOVE THE RED WIRE WITH RAPID CONNECTOR FROM TERMINAL #7, AND TRANSFER IT TO TERMINAL #5.

WARNING:

MOTORISED DOORS CAN CAUSE SERIOUS INJURIES OR DEATH. MANARAS STRONGLY RECOMMENDS THE USE OF ENTRAPMENT PROTECTION SYSTEMS, ESPECIALLY IN THE CASES OF MOMENTARY CONTACT TO CLOSE AS IN B2 WIRING OR TIMER TO CLOSE.

2 CONSTANT PRESSURE OPEN

1. REMOVE THE GRAY WIRE FROM TERMINAL #3 AND PLACE IT ON TERMINAL #4

3 WIRING FOR INSTANT STOP (ON SAFETY EDGE OR DEVICE)

1. REMOVE THE YELLOW WIRE FROM ADV. OPEN LIMIT SWITCH, AND CAP IT.
2. REMOVE THE BLUE WIRE FROM PIN #4 OR REVERSING RELAY(RR) AND CAP IT.

4 ADDING A TIME DELAY ON REVERSE



5 CONSTANT PRESSURE OPEN & CLOSE- D1

PERFORM THE MODIFICATION EXPLAINED IN THE NOTES, 1B 2 AND 3

6 ANY OTHER OPTIONS

FOR ANY OTHER OPTIONS LIKE TIMER TO CLOSE, MID-STOP WIRING, LONG DISTANCE MODULE, OR ANY OTHER SPECIAL LOGIC SEQUENCE PLEASE CONSULT MANARAS/OPERA.

WIRING DIAGRAM FOR MGH/MGT/MTB/MTBH 120/230 VAC, 1 PHASE MOTORS

TITLE	M11MAB-W	DES	BP	REV	E	DATE	12. FEB. 2007
PROJECT	MANARAS-OPERA						
CLIENT	136 ONEIDA DRIVE POINTE-CLAIRE, QC H9R 1A8 TEL: 1-800-361-2260 FAX: 1-888-626-0606						
ENGINEER	DISTRIBUTOR						

