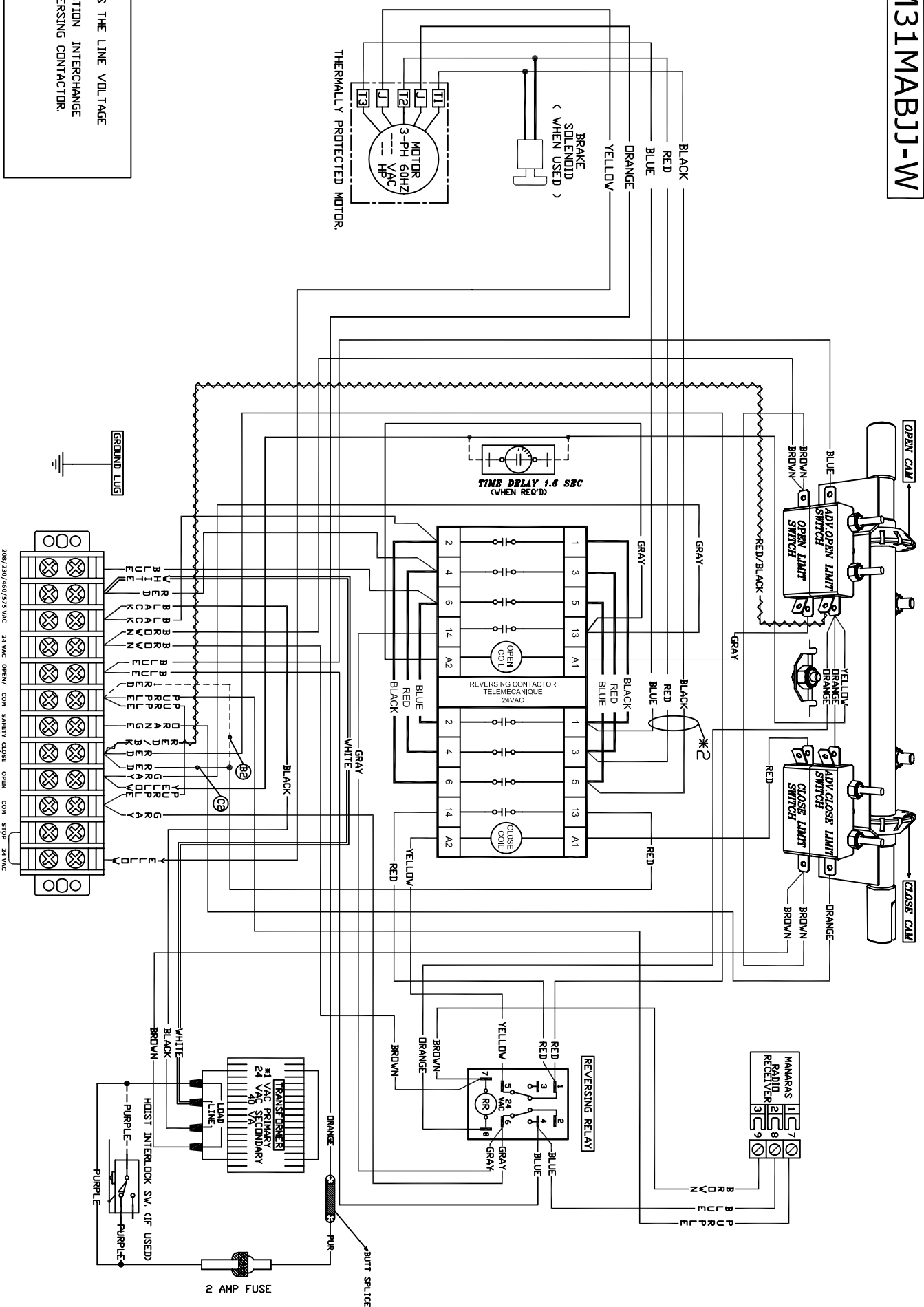
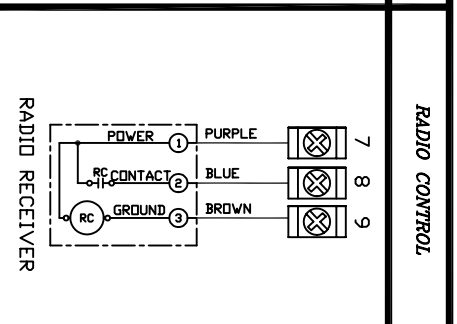
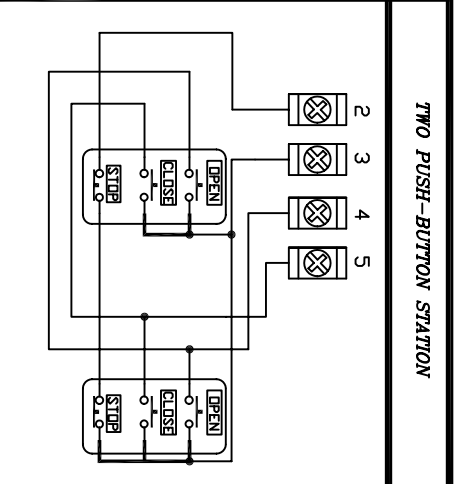
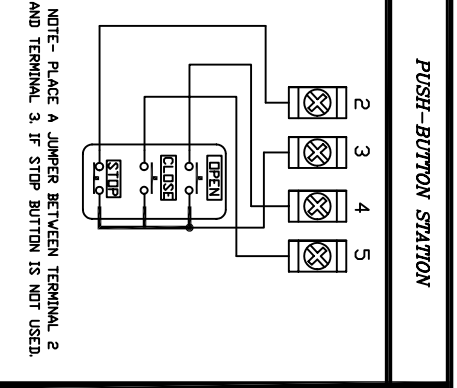


DRAWING-M31MABJJ-W



NOTE:-
 #1. TRANSFORMER IS SAME AS THE LINE VOLTAGE
 #2. TO REVERSE MOTOR ROTATION INTERCHANGE
 ANY TWO WIRES ON REVERSING CONTACTOR.

LINE POWER	24 VAC POWER	EXTERNAL INTERLOCK	SAFETY REVERSE	OPEN/CLOSE COMMAND
L1 L2 L3 POWER SUPPLY 208/230/460/575 VAC 3 Ph, 60 Hz.	1 9 24 VAC POWER AVAILABLE 10VA MAX.	1 2 FACTORY INSTALLED JUMPER REMOVE IF EXT. INTERLOCK IS USED.	3 6 CONTACT FOR SAFETY EDGE/SAFETY DEVICE	7 8 CONTACT FOR OPEN/CLOSE DEVICE.



1 ON SITE MODIFICATIONS

- NOTE-(C2)/(B2)
 C2 ⇄ B2
 B2 ⇄ C2
- 1A REMOVE THE RED WIRE WITH RAPID CONNECTOR FROM TERMINAL #5, AND TRANSFER IT TO TERMINAL #7.
 - 1B REMOVE THE RED WIRE WITH RAPID CONNECTOR FROM TERMINAL #7, AND TRANSFER IT TO TERMINAL #5.

WARNING:
 MOTORIZED DOORS CAN CAUSE SERIOUS INJURIES OR DEATH. MANARAS STRONGLY RECOMMENDS THE USE OF ENTRAPMENT PROTECTION SYSTEMS, ESPECIALLY IN THE CASES OF MOMENTARY CONTACT TO CLOSE AS IN B2 WIRING OR TIMER TO CLOSE.

- 2 CONSTANT PRESSURE OPEN

- 3 WIRING FOR INSTANT STOP (ON SAFETY EDGE OR DEVICE)
 1. REMOVE THE YELLOW WIRE FROM ADV. OPEN LIMIT SWITCH, AND CAP IT.
 2. REMOVE THE BLUE WIRE FROM PIN # 4 OR REVERSING RELAY(RR) AND CAP IT.

- 4 ADDING A TIME DELAY ON REVERSE
 ADV. OPEN L.S.
 1. REMOVE THE YELLOW WIRE FROM ADV. OPEN LIMIT SWITCH, CONNECT THIS WIRE TO ONE END OF TIME-DELAY.
 2. FROM OTHER END OF THE TIME-DELAY, CONNECT BACK TO ADV. OPEN LIMIT SWITCH.
 T.D. MODULE

- 5 CONSTANT PRESSURE OPEN & CLOSE - DI
 PERFORM THE MODIFICATION EXPLAINED IN THE NOTES, 1B 2 AND 3
- 6 ANY OTHER OPTIONS
 FOR ANY OTHER OPTIONS LIKE, TIMER TO CLOSE, MID-STOP WIRING, LONG DISTANCE MODULE, OR ANY OTHER SPECIAL LOGIC SEQUENCE, PLEASE CONSULT MANARAS/OPERA.

WIRING DIAGRAM FOR MGH/MGT/MTY/MTBH 208/460/575 VAC, 3 PHASE MOTORS

TITLE	DES	REV	DATE
M31MABJJ-W	BP	E	12. FEB. 2007
PROJECT	CLIENT	ENGINEER	DISTRIBUTOR
MANARAS-OPERA 136 ONEIDA DRIVE POINTE-CLAIRE, QC H9R 1A8 TEL: 1-800-361-2260 FAX: 1-888-626-0606			

