

		DESCRIPTION	# MANARAS
120V - 1PH	SOLENOID001	MOTOR 1/2HP - 120V/230V - 1PH	MOTOR336
		1PH - 10 AMPS RESET	RESET007
		MOTOR 3/4HP - 120V/230V - 1PH	MOTOR337
		1PH - 12 AMPS RESET	RESET009
		MOTOR 1HP - 120V/230V - 1PH	MOTOR350
		1PH - 17 AMPS RESET	RESET014
230V - 1PH	SOLENOID002	MOTOR 1/2HP - 120V/230V - 1PH	MOTOR336
		1PH - 5 AMPS RESET	RESET002
		MOTOR 3/4HP - 120V/230V - 1PH	MOTOR337
		1PH - 6 AMPS RESET	RESET003
		MOTOR 1HP - 120V/230V - 1PH	MOTOR350
		1PH - 8 AMPS RESET	RESET005
208V 3PH	SOLENOID003	MOTOR 1.5HP - 120V/230V - 1PH	MOTOR355
		1PH - 11 AMPS RESET	RESET008
		MOTOR 1/2HP - 208V/460V - 3PH	MOTOR357
		MOTOR 3/4HP - 208V/460V - 3PH	MOTOR358
		MOTOR 1HP - 208V/460V - 3PH	MOTOR359
		MOTOR 1.5HP - 208V/460V - 3PH	MOTOR361
460V 3PH	SOLENOID004	MOTOR 1/2HP - 208V/460V - 3PH	MOTOR357
		MOTOR 3/4HP - 208V/460V - 3PH	MOTOR358
		MOTOR 1HP - 208V/460V - 3PH	MOTOR359
		MOTOR 1.5HP - 208V/460V - 3PH	MOTOR361
575V 3PH	SOLENOID004	MOTOR 3/4HP - 575V - 3PH	MOTOR384
		MOTOR 1HP - 575V - 3PH	MOTOR385
		MOTOR 1.5HP - 575V - 3PH	MOTOR386

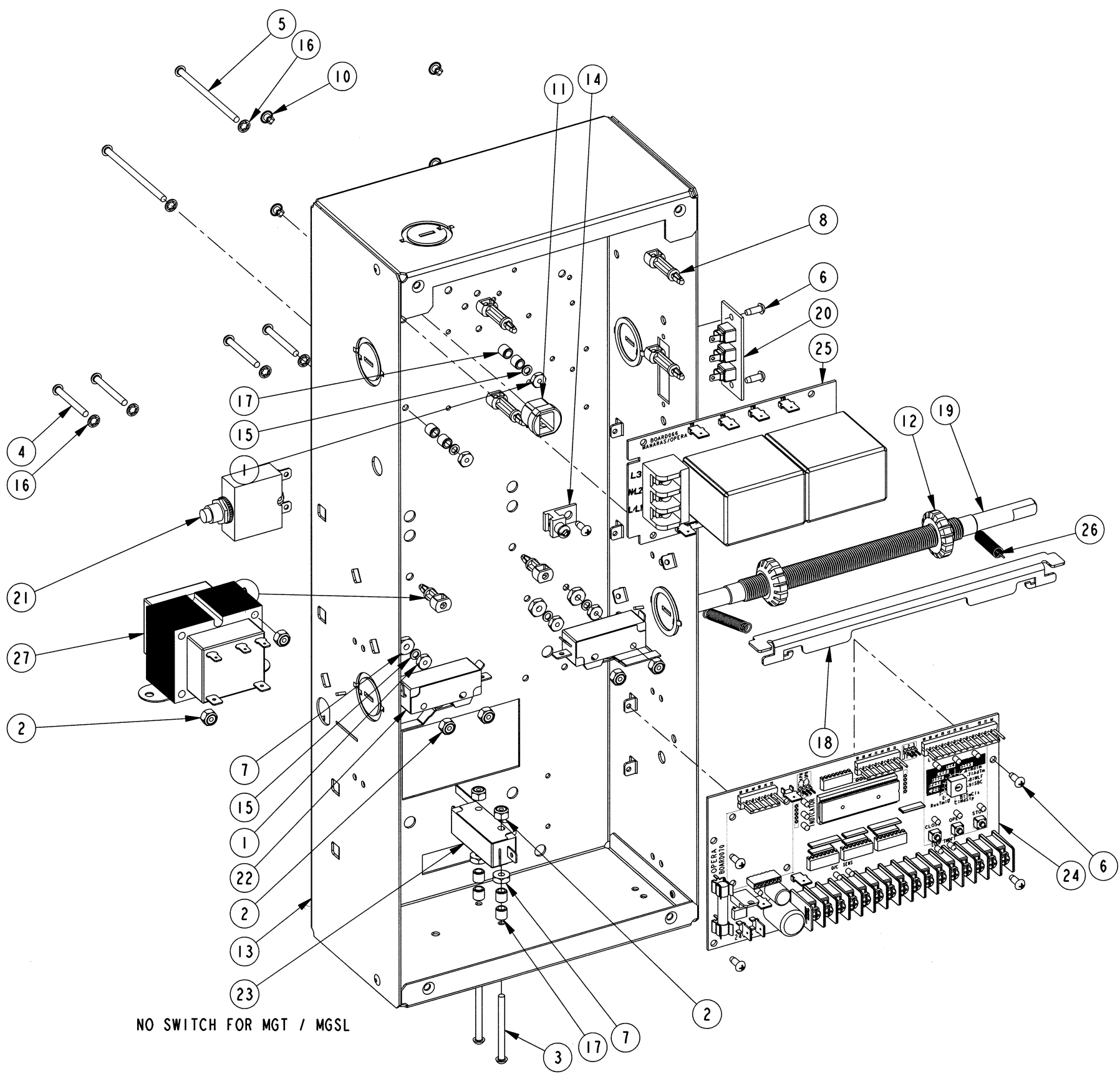
No	Qty	DESCRIPTION	# MANARAS	REV
1	4	6-32 X 3/8 TYPE F S-TAP. SCREW	SCREW094	
2	4	10-24 X 1/2 TYPE F S-TAP. SCREW	SCREW067	
3	8	10-24 X 3/8 TYPE T S-TAP. SCREW	SCREW022	
4	1	#41-1R66P	USE CHAIN013	
5	1	#410-1R48P(INCL. IC/L)	USE CHAIN058	
6	1	#50 CONNECTING LINK 50-1	LINK011	
7	5	1/4-20 HEX NUT ZP	NUT006	
8	1	1/4-20 HEX NYLON LOCK NUT ZP	NUT020	
9	1	1/4-20 X 1-1/2 HEX BOLT	BOLT010	
10	1	1/4-20 X 1-1/4 RND HD SQ NECK BOLT	BOLT083	
11	4	1/4-20 X 3/4 HEX BOLT	BOLT002	
12	4	1/4-20 X 5/16 SET SCREW	SCREW001	
13	4	3/8-16 HEX NUT ZP	NUT010	
14	2	3/8-16 X 1 HEX BOLT	BOLT023	
15	4	3/8-16 X 1-1/2 HEX BOLT	BOLT027	
16	2	3/8-16 X 1-1/4 HEX BOLT	BOLT026	
17	2	3/8-16 X 3/4 HEX BOLT	BOLT022	
18	1	410B18 X 1 K1/4 2S5/16-18	SPR410B18X1	1
19	1	410B9 X 5/8 K3/16 2S1/4-20 CR	SPR410B9X5/8	1
20	1	41B12 X 1 K1/4 2S5/16-18 PH1/4 CR	SPR41B12X1	5
21	1	41B15 X 1 K1/4 2S5/16-18	SPR41B15X1	2
22	1	41B36 X 1 K1/4 2S5/16-18	SPR41B36X1	4
23	10	5/16-18 X 5/16 SET SCREW	SCREW003	
24	1	BRAKE BAND ASSEMBLY HEAVY DUTY	BRAKEPART019	
25	1	BRAKE DRUM	DRUM005	1
26	1	BRAKE LEVER PIVOT	BUSHING053	3
27	2	COLLAR 1"	COLLAR007	
28	1	COUPLING CLUTCH OGH	COUPLING017	0
29	1	EXTERNAL 3/8 RETAINING RING	CLIP021	
30	2	FLANGE BEARING 1" C16-3F*5	BEARING007	
31	1	FLT WASHER 3/8 (.391X.750X.130) ZP	WASHER064	
32	1	GH FRONT COVER GREEN	COVER019	
33	1	GH-MGH CONTROL BOX	CBOX033	3
34	1	GH-MGH CONTROL BOX BRACKET	BRACKET234	2
35	1	GH-MGH CONTROL BOX COVER	COVER056	2
36	1	GH-MGH-RCGH ADJUST BRAKE LEVER	LEVER052	1
37	5	HELICAL SPRING LOCK WASHER 1/4 ZP	WASHER026	
38	10	HELICAL SPRING LOCK WASHER 3/8 ZP	WASHER030	
39	1	KEY 1/4 X 1	KW021	5
40	1	KEY 1/4 X 3.00 (INCL. W/REDUCER)	KEY_REDUCER	5
41	1	KEY 1/4 X 4.33 (INCL. W/REDUCER)	KEY_REDUCER	5
42	1	LIMIT BOX SUPPORT B.GHM	BRACKET013	7
43	1	MDJ, MGT, MSJ, MTH, MTBH DRIVE	SHAFT048	5
44	1	MGH BRAKE LEVER C-1 GALVANIZED	LEVER051	
45	1	MGT FRAME	FRAME010	
46	1	MGT FRAME	FRAME023	5
47	1	MOTOR	SEE TABLE	
48	2	OPERA LIMIT SHAFT BUSHING	BUSHING055	1
49	1	PIN COTTER 1/8 X 1-1/2	PIN001	
50	1	PIN COTTER 1/8 X 3	PIN002	
51	1	PIN SLOTTED SPRING 1/4 X 1.5	PIN010	
52	1	REDUCER CH60-40D FR 56	REDUCER028	
53	1	SOLENOID	SEE TABLE	
54	1	TROLLEY ARM DISCONNECT SPRING	SPRING026	
55	1	TYPE A PLAIN WASHER 1/4 N ZP	WASHER004	
56	1	TYPE A PLAIN WASHER 3/16 ZP	WASHER003	
57	8	TYPE A PLAIN WASHER 5/16 W ZP	WASHER008	

PART DESCRIPTION		MGT / MGSL	
PART NUMBER MGT / MGSL			
DRAWN BY: J. PROULX		TEL: 1-800-361-2260	
DATE: 2011-06-09		FAX: 1-888-626-0606	
UPDATED BY: —		DATE: —	
DATE: —			SHEET: 1 of 1

CONFIDENTIAL: THIS DRAWING AND/OR THE INFORMATION CONTAINED HEREIN IS AND REMAINS THE SOLE PROPERTY OF, AND IS PROPRIETARY TO, MANARAS-OPERA. THIS DRAWING AND/OR INFORMATION SHALL BE KEPT CONFIDENTIAL AND MAY NOT BE REPRODUCED, COPIED, MODIFIED, DISCLOSED, TRANSFERRED, OR MADE AVAILABLE TO OTHERS, EXCEPT WITH THE EXPRESS CONSENT OF MANARAS-OPERA. IT IS LOANED IN CONFIDENCE FOR MUTUAL ASSISTANCE PURPOSES ONLY. MANARAS-OPERA MAY AT ANY TIME, WRITTEN MODIFY THE DRAWING AND/OR INFORMATION CONTAINED HEREIN.

Qty	DESCRIPTION	# MANARAS
120V - 1PH	TRANSFO 120/240V-24V 40VA	TRANSF143
230V - 1PH	TRANSFO 120/240V-24V 40VA	TRANSF143
208V - 3PH	TRANSFO 240V/208V-24V 40VA	TRANSFO37
480V - 3PH	TRANSFO 480V-24V 40VA	TRANSFO88
575V - 3PH	TRANSFO 575V-24V 40VA	TRANSF142

No	Qty	DESCRIPTION	# MANARAS	REV
1	6	6-32 HEX NUT ZP	NUT002	
2	8	6-32 HEX NYLON LOCK NUT ZP	NUT018	
3	2	6-32 X 1-5/8 MACHINE SCREW	SCREW097	
4	4	6-32 X 1.25 MACHINE SCREW	SCREW109	
5	2	6-32 X 2-1/2 MACHINE SCREW	SCREW046	
6	7	6-32 X 3/8 TYPE F S-TAP. SCREW	SCREW094	
7	6	10-24 HEX NUT ZP	NUT004	
8	4	BOARD SUPPORT 1 IN.	SUPPORT008	
9	2	BOARD SUPPORT 5/8 IN.	SUPPORT001	
10	4	BOARD SUPPORT RIVET	SUPPORT002	
11	1	CABLE STRAIN RELIEF 5/8 OD	BUSHING058	
12	2	CAM LIMIT OPERA	CAM011	2
13	1	GH-MGH CONTROL BOX	CBOX033	3
14	1	GROUND LUG TA61G-UL	CONNECTOR039	
15	6	HELICAL SPRING LOCK WASHER NO 6 ZP	WASHER023	
16	6	INTERNAL TOOTH LOCKWASHER NO6 ZP	WASHER062	
17	8	LIMIT SWITCH SPACER 1/4 X 1/4 ALU.	SPACER017	
18	1	OPERA CBOX CAMPLATE	CAMPLATE019	0
19	1	OPERA LIMIT SHAFT	SHAFT103	6
20	1	RADIO CONTROL TERM STRIP	TSTRIP005	
21	1	RESET	SEE MOTOR TABLE	
22	2	SINGLE LIMIT SWITCH - LEVER 46 DEG	LIMIT023	X1
23	1	SNAP-ACT. SW.SPDT-LEVER FLAT 1.5"	LIMIT025	0
24	1	STD ELECT. CONTR. BOARD	BOARD070	
25	1	STD ELECT. POWER BOARD 2 RELAYS	BOARD066	
26	2	TOGGLE SWITCH SPRING	SPRING030	
27	1	TRANSFO TO 24V	SEE TABLE	



NO SWITCH FOR MGT / MGSL

PART DESCRIPTION		
MGH / MGT / MGSL CBOX ECB		
PART NUMBER	MANARAS-OPERA	
MGH-BOARD070	136 ONEIDA DRIVE	
DRAWN BY: J. PROULX	POINTE-CLAIRE, QC, H9R 1A8	
DATE: 2011-01-06	TEL: 1-800-361-2260	
UPDATED BY: J. PROULX	FAX: 1-888-626-0606	
DATE: 2011-06-09		

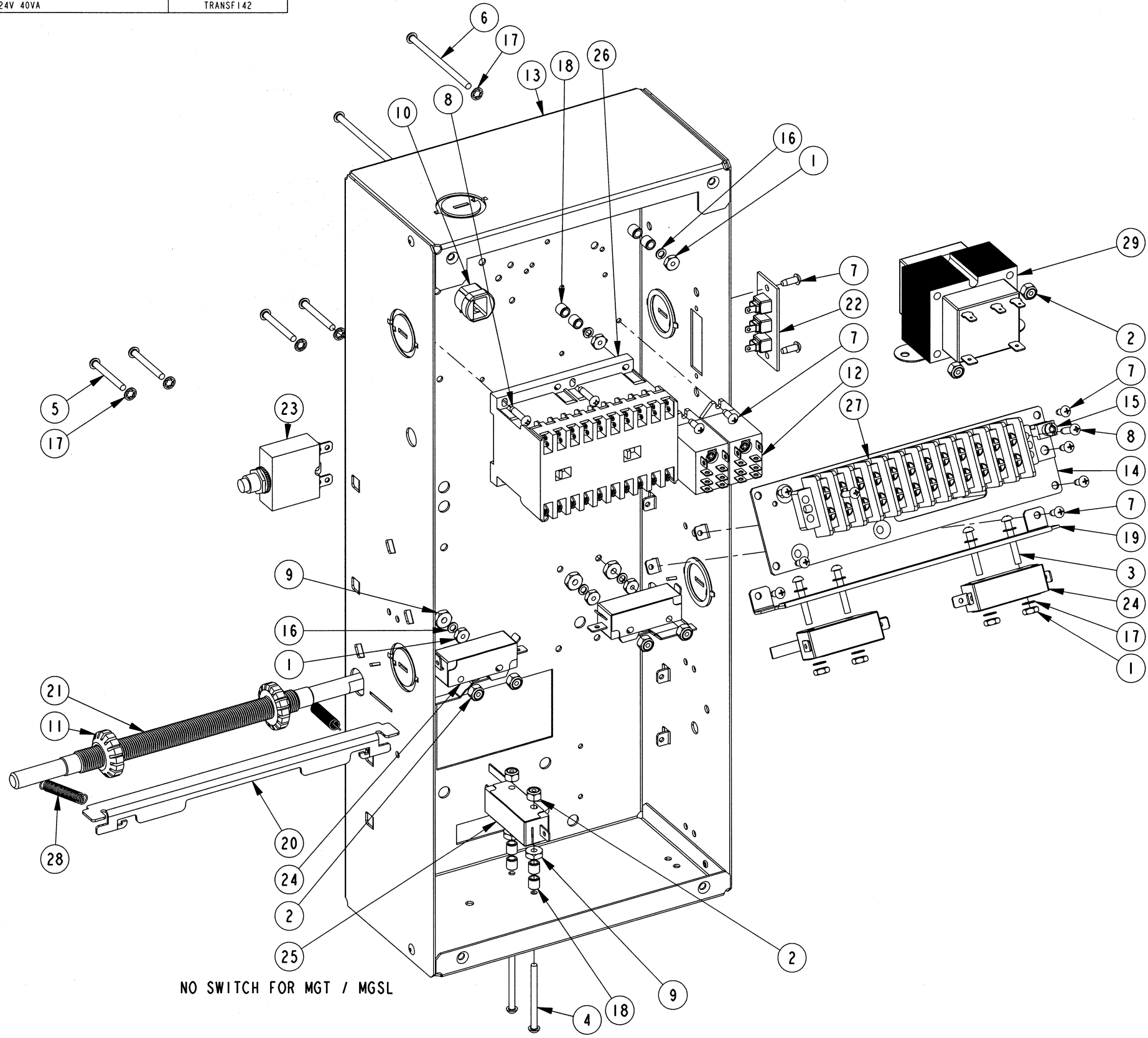


SHEET: 1 of 1

CONFIDENTIAL: THIS DRAWING AND/OR THE INFORMATION CONTAINED HEREIN IS AND REMAINS THE SOLE PROPERTY OF, AND IS PROPRIETARY TO, MANARAS-OPERA. THIS DRAWING AND/OR INFORMATION SHALL BE KEPT CONFIDENTIAL AND MAY NOT BE REPRODUCED, COPIED, MODIFIED, DISCLOSED, TRANSFERRED, OR MADE AVAILABLE TO OTHERS, EXCEPT WITH THE EXPRESS CONSENT OF MANARAS-OPERA. IT IS LOANED IN CONFIDENCE FOR MUTUAL ASSISTANCE PURPOSES ONLY. MANARAS-OPERA MAY AT ANY TIME, WRITTEN MODIFY THE DRAWING AND/OR INFORMATION CONTAINED HEREIN.

Qty	DESCRIPTION	# MANARAS
120V - 1PH	TRANSFO 120/240V-24V 40VA	TRANSF143
230V - 1PH	TRANSFO 120/240V-24V 40VA	TRANSF143
208V - 3PH	TRANSFO 240V/208V-24V 40VA	TRANSF037
480V - 3PH	TRANSFO 480V-24V 40VA	TRANSF088
575V - 3PH	TRANSFO 575V-24V 40VA	TRANSF142

No	Qty	DESCRIPTION	# MANARAS	REV
1	10	6-32 HEX NUT ZP	NUT002	
2	8	6-32 HEX NYLON LOCK NUT ZP	NUT018	
3	4	6-32 X 1 MACHINE SCREW	SCREW042	
4	2	6-32 X 1-5/8 MACHINE SCREW	SCREW097	
5	4	6-32 X 1.25 MACHINE SCREW	SCREW109	
6	2	6-32 X 2-1/2 MACHINE SCREW	SCREW046	
7	13	6-32 X 3/8 TYPE F S-TAP. SCREW	SCREW094	
8	6	6-32 X 5/8 TYPE F S-TAP. SCREW	SCREW095	
9	6	10-24 HEX NUT ZP	NUT004	
10	1	CABLE STRAIN RELIEF 5/8 OD	BUSHING058	
11	2	CAM LIMIT OPERA	CAM011	2
12	2	DPDT 24V RELAY	RELAY024	
13	1	GH-MGH CONTROL BOX	CBOX033	3
14	1	GH-MGH CONTROL BOX BRACKET	BRACKET234	2
15	1	GROUND LUG TA61G-UL	CONNECTOR039	
16	6	HELICAL SPRING LOCK WASHER NO 6 ZP	WASHER023	
17	14	INTERNAL TOOTH LOCKWASHER NO6 ZP	WASHER062	
18	8	LIMIT SWITCH SPACER 1/4 X 1/4 ALU.	SPACER017	
19	1	OPERA CBOX ADV LIMITS BRACKET	BRACKET225	0
20	1	OPERA CBOX CAMPLATE	CAMPLATE019	0
21	1	OPERA LIMIT SHAFT	SHAFT103	6
22	1	RADIO CONTROL TERM STRIP	TSTRIP005	
23	1	RESET	SEE MOTOR TABLE	
24	4	SINGLE LIMIT SWITCH - LEVER 46 DEG	LIMIT023	XI
25	1	SNAP-ACT. SW.SPDT-LEVER FLAT 1.5"	LIMIT025	0
26	1	TELEM. REVERS. CONT. 24V	CONTACTORXXX	
27	1	TERMINAL STRIP 12 POSITIONS	TSTRIP001	
28	2	TOGGLE SWITCH SPRING	SPRING030	
29	1	TRANSFO 120/240-24 40VA	TRANSF143	



NO SWITCH FOR MGT / MGSL

PART DESCRIPTION		
MGH / MGT / MGSL CBOX HARDWARE		
PART NUMBER	MANARAS-OPERA	
MGH-HW	136 ONEIDA DRIVE	
DRAWN BY: J. PROULX	POINTE-CLAIRE, QC, H9R 1A8	
DATE: 2011-06-09	TEL: 1-800-361-2260	
UPDATED BY: —	FAX: 1-888-626-0606	
DATE: —		



SHEET: 1 of 1

CONFIDENTIAL: THIS DRAWING AND/OR THE INFORMATION CONTAINED HEREIN IS AND REMAINS THE SOLE PROPERTY OF, AND IS PROPRIETARY TO, MANARAS-OPERA. THIS DRAWING AND/OR INFORMATION SHALL BE KEPT CONFIDENTIAL AND MAY NOT BE REPRODUCED, COPIED, MODIFIED, DISCLOSED, TRANSFERRED, OR MADE AVAILABLE TO OTHERS, EXCEPT WITH THE EXPRESS CONSENT OF MANARAS-OPERA. IT IS LOANED IN CONFIDENCE FOR MUTUAL ASSISTANCE PURPOSES ONLY. MANARAS-OPERA MAY AT ANY TIME, WRITTEN MODIFY THE DRAWING AND/OR INFORMATION CONTAINED HEREIN.