

Motion and Presence Detectors

Laser, Microwave and Infrared Technology Kits

MOTION 003



- Non-monitored (NO or NC output relay)
- Motion detector (microwave doppler radar technology)
- Power Supply: 12-24 V_{AC}/V_{DC}
- Bi-directional
- IP65 enclosure
- Materials: ABS, polycarbonate
- Detection Field: 13' x 6.5' @ 8.2'
- Installation Height: 7' to 11.5'
- Current Consumption: < 2 W
- Operation Temperature: -30°C to 60°C (-22°F to 140°F)
- Dimensions: 3.75"W x 4"H x 5"D (+ support)
- Includes: Motion detector, remote control for long distance programming, 2x AAA (1.5V) batteries
- Replacement parts: order MOTION010 (detector), MOTION012 (remote)

MOTION 003A



- Non-monitored (NO or NC output relay)
- Motion detector (microwave doppler radar technology)
- Power Supply: 12-24 V_{AC}/V_{DC}
- Bi-directional
- IP65 enclosure
- Materials: ABS, polycarbonate
- Detection Field: 13' x 16' @ 16'
- Installation Height: 11.5' to 23'
- Current Consumption: < 2 W
- Operation Temperature: -30°C to 60°C (-22°F to 140°F)
- Dimensions: 3.75"W x 4"H x 5"D (+ support)
- Includes: Motion detector, remote control for long distance programming, 2x AAA (1.5V) batteries
- Replacement parts: order MOTION011 (detector), MOTION012 (remote)

MOTION 003E



- Non-monitored (2 NO/NC output relays)
- Motion/presence detector (laser technology)
- Power Supply: 10-35 V_{DC}
- 4 curtains of detection
- Nema 4/IP65 enclosure
- Materials: ASA, polycarbonate
- Max. Detection Field: 30' x 30'
- Current Consumption: < 5 W
- Operation Temperature: -30°C to 60°C (-22°F to 140°F)
- Dimensions: 5"W x 2.75"H x 3.66"D (+ support)
- Includes: Motion detector, remote control for long distance programming, 2x AAA (1.5V) batteries
- Replacement parts: order MOTION013 (detector), MOTION012 (remote)

MOTION 003B



- Non-monitored (2 NO/NC output relays)
- Motion/presence detector (microwave and infrared technology)
- Power Supply: 12-24 V_{AC}/V_{DC}
- Nema 4/IP65 enclosure
- Materials: ABS, polycarbonate
- Detection Field: 13' x 16.5' (microwave) 10" x 10" (infrared)
- Installation Height: 8' to 16'
- Current Consumption: < 3.5 W
- Operation Temperature: -30°C to 60°C (-22°F to 140°F)
- Dimensions: 3.75"W x 4"H x 5"D (+ support)
- Includes: Motion detector, remote control for long distance programming, 2x AAA (1.5V) batteries
- Replacement parts: order MOTION014 (detector), MOTION012 (remote)

MOTION 003C



- Non-monitored (2 NO/NC output relays)
- Motion/presence detector (microwave and infrared technology)
- Power Supply: 12-24 V_{AC}/V_{DC}
- Nema 4/IP65 enclosure
- Materials: ABS, polycarbonate
- Detection Field: 13' x 6.5' (microwave) 7.5" x 7.5" (infrared)
- Installation Height: 6.5' to 11.5'
- Current Consumption: < 3.5 W
- Operation Temperature: -30°C to 60°C (-22°F to 140°F)
- Dimensions: 3.75"W x 4"H x 5"D (+ support)
- Includes: Motion detector, remote control for long distance programming, 2x AAA (1.5V) batteries
- Replacement parts: order MOTION014A (detector), MOTION012 (remote)

MOTION 003D



- Non-monitored (2 NO/NC output relays)
- Presence detector (infrared technology)
- Power Supply: 12-24 V_{AC}; 12-30 V_{DC}
- 2 curtains of detection
- IP54 enclosure
- Installation Height: 6.5' to 11.5'
- Current Consumption: < 2.5 W
- Operation Temperature: -25°C to 55°C (-13°F to 131°F)
- Dimensions: 10.6"W x 2.27"H x 2.25"D
- Includes: Motion detector, remote control for long distance programming, 2x AAA (1.5V) batteries
- Replacement parts: order MOTION015 (detector), MOTION012 (remote)



Motion and Presence Detectors

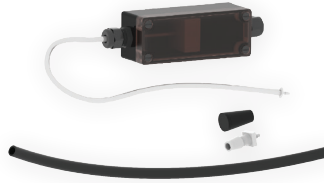
Pneumatic Treadle Kits

TREADLE 002



- Pneumatic (forced air) treadle kit
- Type: 2-wires / SPDT (NO and NC), non-monitored
- Installation at ground level
- Materials: EPT/EPDM (hose), ABS (air switch)
- Dimensions (air switch): 5.25" W x 2.125" H x 2.125" D
- Dimensions (hose): 10', 0.38" inside Ø / 0.75" outside Ø
- Includes: Air switch, hose, air hose plug
- Replacement parts: order AIRSWITCH018, HOSE001, PLUG005

TREADLE 002A



- Pneumatic (forced air) treadle kit
- Type: 2-wires / SPDT (NO), non-monitored
- Installation at ground level
- Nema 4X enclosure
- Materials: EPT/EPDM (hose), polycarbonate / silicone (air switch)
- Dimensions (air switch): 6.63" W x 1.75" H x 1.75" D
- Dimensions (hose): 10', 0.38" inside Ø / 0.75" outside Ø
- Includes: Air switch, hose, plug and connection adapter
- Replacement parts: order AIRSWITCH015A, HOSE001, PLUG005, PLUG023

Motion and Presence Detectors

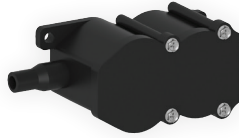
Components and Accessories

MOTION 012



- Universal remote control
- Wireless
- Dimensions: 2" W x 5.25" H x 1" D
- Includes: 2x AAA (1.5V) batteries
- Compatible with: MOTION003, MOTION003A, MOTION003B, MOTION003C, MOTION003D, MOTION003E

AIRSWITCH 018



- Air switch
- Type: 2-wires/SPDT (NO and NC), non-monitored
- Materials: ABS
- Nema 12 enclosure
- Dimensions: 5.25" W x 2.125" H x 2.125" D
- Compatible with HOSE001, HOSE009
- Used in: PNEUMATIC007, PNEUMATIC008, TREADLE002

AIRSWITCH 015A



- Air switch kit
- Type: 2-wires/SPST (NO), non-monitored
- Materials: Polycarbonate (air switch), silicone (tube)
- Power Supply: 220 V_{AC}, 0.5 A max.; 48 V_{DC}, 1 A max.
- Dimensions: 6.63" W x 1.75" H x 1.75" D
- Dimensions (tube): 0.09" inside Ø x 12" L
- Adapter for tube with 0.5" inside Ø (HOSE009) and 0.38" (HOSE001)
- Nema 4X enclosure
- Includes: Air switch, connection adapter, tube
- Compatible with: HOSE001, HOSE009 (order separately according to door width + 2')
- Used in: PNEUMATIC017A, TREADLE002A
- Replacement parts: order AIRSWITCH015, ADAPTER051

HOSE 001



- Air hose
- Materials: EPT/EPDM
- 0.38" inside Ø / 0.57" outside Ø
- Compatible with: AIRSWITCH015A, PLUG005, PLUG023, PNEUMATIC004, PNEUMATIC005, PNEUMATIC006, PNEUMATIC007, PNEUMATIC008, PNEUMATIC009, PNEUMATIC017A, PNEUMATIC021
- When ordering with pneumatic sensing edge kits: order according to door width + 2'

HOSE 009



- Air hose
- Materials: EPT/EPDM
- 0.5" inside Ø / 0.75" outside Ø
- Compatible with: AIRSWITCH015A, PLUG005, PLUG023, PNEUMATIC017A
- When ordering with pneumatic sensing edge kits: order according to door width + 2'

PLUG 005



- Air hose plug
- Materials: Rubber
- Compatible with: HOSE001, HOSE009
- Used in: PNEUMATIC004, PNEUMATIC005, PNEUMATIC006, PNEUMATIC007, PNEUMATIC008, PNEUMATIC009, PNEUMATIC017A, PNEUMATIC021, TREADLE002, TREADLE002A

Motion and Presence Detectors

Components and Accessories

PLUG 023



- Air hose plug (with hole)
- Materials: Rubber
- Compatible with: HOSE001, HOSE009
- Used in: PNEUMATIC004, PNEUMATIC005, PNEUMATIC006, PNEUMATIC007, PNEUMATIC008, PNEUMATIC009, PNEUMATIC017A, PNEUMATIC021

ADAPTER 051



- Connection adapter, 0.09" to 0.5" Ø, for air hose with 0.38" or 0.5" inside Ø
- Compatible with: AIRSWITCH015, AIRSWITCH016, AIRSWITCH017A, HOSE001, HOSE009
- Used in: AIRSWITCH015A, AIRSWITCH016B, PNEUMATIC017A, PNEUMATIC021, TREADLE002A