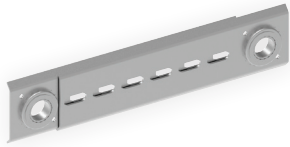


# Mounting Accessories and Hardware

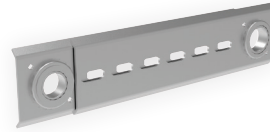
## Chain Spreaders, Mounting Brackets and Isolating Kits

### SPREADER 001



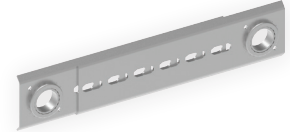
- Chain spreader 1"/1"
- Materials: Zinc-plated steel
- Dimensions: 0.75" W x 16" to 22.5" H x 3.5" D
- Extension Shaft to Shaft: min. 12", max. 19.5"
- Includes: Chain spreader, 1" collar shaft (2x), mounting bolts (2x)
- Applications: Jackshaft operators, ≤ 1.5HP

### SPREADER 002



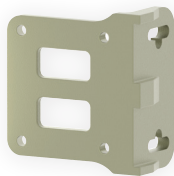
- Chain spreader 1"/1.25"
- Materials: Zinc-plated steel
- Dimensions: 0.75" W x 16" to 22.5" H x 3.5" D
- Extension Shaft to Shaft: min. 12", max. 19.5"
- Includes: Chain spreader, 1" and 1.25" collar shaft (1x), mounting bolts (2x)
- Applications: Jackshaft operators, ≤ 1.5HP

### SPREADER 003



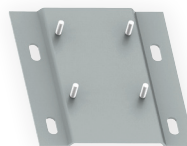
- Chain spreader 1.25"/1.25"
- Materials: Zinc-plated steel
- Dimensions: 0.75" W x 16" to 22.5" H x 3.5" D
- Extension Shaft to Shaft: min. 12", max. 19.5"
- Includes: Chain spreader, 1.25" collar shaft (2x), mounting bolts (2x)
- Applications: Jackshaft operators, ≤ 1.5HP

### BRACKET 111



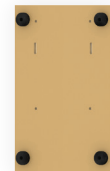
- Hood angle mounting bracket
- Materials: Steel
- Applications: Jackshaft hood mounted operators on rolling doors
- Dimensions: 8.1" W x 7.5" H x 4.2" D

### BRACKET 112



- Wall mounting bracket
- 4 studs 3/8"-16 x 1.25"
- Materials: Steel
- Applications: Jackshaft operators
- Dimensions: 10.5" W x 11.75" H

### ISOLATOR 004



- Vibration reducing mounting kit
- Applications: Jackshaft operators (Opera brand)

# Mounting Accessories and Hardware

## Splash Proof and Protective Covers

### SPLASH 001



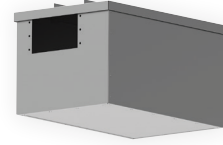
- Splash proof cover
- Materials: Galvanized steel
- Dimensions: 21" W x 28" H x 22" D
- Compatible with jackshaft models: OGH, MGH up to 2HP, GHW/C, MGHW/C up to 2HP

### SPLASH 003



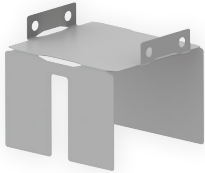
- Splash proof cover
- Materials: Galvanized steel
- Dimensions: 22" W x 30" H x 16" D
- Compatible with jackshaft models: OPJ, OPH, OHJ, OSH, MSJ, RSH, RVH, OPJW/C, OPHW/C, OHJW/C, OSHW/C

### SPLASH 005



- Splash proof cover
- Materials: Galvanized steel
- Dimensions: 17" W x 15" H x 27" D
- Compatible with trolley and sliding door models: OMT, OTH, OTBH, OSL, RTBH, OTHW/C, OTBHW/C, OSLW/C

### MODKIT 148



- Anti-bird nest replacement/upgrade kit
- Prevents birds from building a nest inside the operator
- Materials: Galvanized steel
- Dimensions: 5.5" W x 4.15" H x 6.22" D
- Includes: Guard, hardware
- Compatible with trolley and sliding door models: OTH, OTBH, OSL

# Mounting Accessories and Hardware

## Hand Chain and Various Chain Kits

### CHAIN 002



- Pocket wheel hand chain
- Materials: Yellow zinc-plated steel
- For models: OMH, OPH, OHJ, OSH, MSJ, OGH, MGH, GHW/C

### CHAINKIT 002A



- Disconnect chain kit, 14' extension
- Materials: White zinc-plated steel
- Includes: 14' chain, S-connection hook
- For models: OMJ, OPJ, OSH, MSJ, MGH, GHW/C

### CHAINKIT 004



- Disconnect chain kit, 28' extension
- Materials: White zinc-plated steel
- Includes: 28' chain, S-connection hook
- For models: OMJ, OPJ, OSH, MSJ, MGH, GHW/C

### CHAINKEEPER 001



- Chain keeper for pocket wheel hand chain
- Keeps chain in place, out of door's path
- Materials: Zinc-plated steel
- Dimensions: 3.25" W x 2.75" H x 1.75" D
- For models: OMH, OPH, OHJ, OSH, MSJ, OGH, MGH, GHW/C

### CHAINKEEPER 002



- Chain keeper for disconnect chain
- Keeps chain in place, out of door's path
- Materials: White zinc-plated steel
- Dimensions: 1" W x 2.25" H x 1.5" D
- For models: OMJ, OPJ, OSH, MSJ, MGH, GHW/C

# Mounting Accessories and Hardware

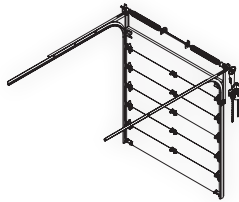
## Hand Cranks and Manual Chain Hoists

### CRANK 009/010



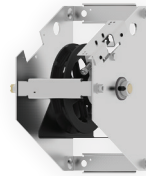
- Hand crank
- To manually operate operators equipped with MOD074A/B instead of using the chain hoist
- Materials: White zinc-plated steel (hook), white powder coated steel (crank), white plastic (handle)
- Lengths Available: 4' (CRANK009) / 6.5' (CRANK010)
- Includes: Crank, hook, handles

### MODKIT 066/066WC



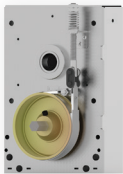
- Chain hoist for manual hand operation of sectional doors
- Hoist directly drives the door shaft with #41 chain
- Wall mount
- Incorporates an electric cut-out
- Hand chain for 14' standard lift door is standard
- Hoist Assembly Width: 8.5" W
- When using with a trolley operator, door arm must be disconnected
- Applications: Trolley operators, center mount jackshafts (MOD164)
- Includes: Hoist, door sprocket (36 tooth), 6' #41 roller chain (MODKIT066)/6' #41 corrosion proof chain (MODKIT066WC)
- Replacement parts: order HOIST002

### HOIST 002



- Self-engaging manual hoist for sectional doors
- Hoist directly drives the door shaft with #41 chain
- Wall mount
- Materials: White zinc-plated steel, polyamide
- Door shaft sprocket and #41 chain, sold separately

### HOIST 003/003A



- Chain hoist for manual hand operation of sectional or light rolling doors
- Equipped with self-braking band brake
- 4:1 reduction
- Type: Hollow shaft
- For 1" door shaft Ø: order HOIST003
- For 1.25" door shaft Ø: order HOIST003A
- Materials: Zinc-plated steel, aluminum alloy
- Includes: Chain keeper, collars (2x), hand chain, torque arm, hardware