

Product Announcement

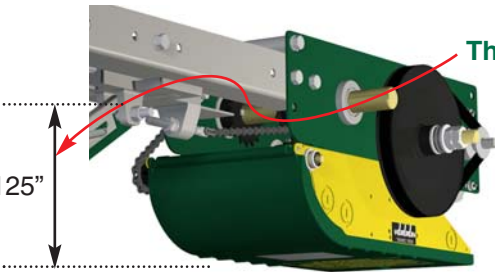
New Opera Medium-Duty Trolley Model Introduced

OMT model >>>



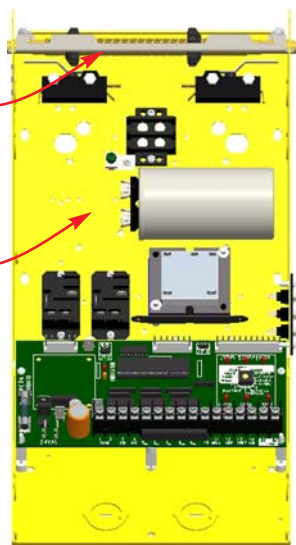
Thinner design

6.125"



Accu-cam®
limit system

Enhanced visibility
control box
(yellow)



Manaras-Opera Presents it's Opera Medium-duty Trolley Operator

Manaras-Opera is pleased to announce the upcoming product launch of their latest addition to the well-known **OPERA** brand of Commercial Door OPERATORS: **OMT**.

The **OPERA** brand name has become synonymous with innovation and reliability. The **OMT** model is next in line to be "OPERAtized" and will be backed by the **OPERA** philosophy.

OMT will replace the current MLT model.

Features

- Medium-duty trolley operator for industrial standard lift sectional doors.
- Eye-pleasing aesthetic green and yellow design. A brighter and larger yellow control box has been used.
- Thinner design, 6.125" below the tracks.
- Implementation of the Opera limit system with the patented **Accu-cam®** feature, which allows for precise and quick one-handed limit adjustments.
- 1/2 HP intermittent-duty instant reverse industrial type motor.
- 4L/A V-belt, chain and sprocket reduction.
- Ball bearings at all critical points.
- Door speed: 11"/second.
- 14 cycles/hour, 50 cycles/day.
- 1" output shaft.
- Nema 1 enclosure standard.
- Available with Electronic Control (ECB) with or without the option of electrical control for MONITORED external entrapment protection devices.
- CSA22.2-247.92 and/or UL325 listed.

The phasing-in/out process will begin in early 2013.

For further information, please contact your Manaras-Opera sales representative.

Toll free number: 800 - 361 - 2260
www.manaras.com