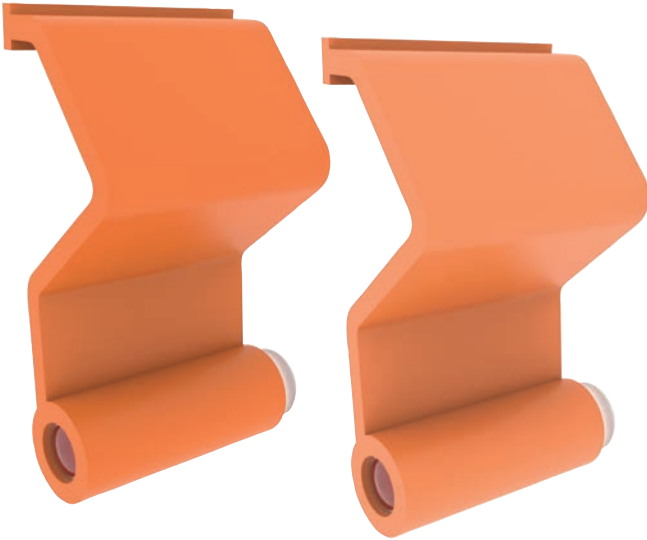


# Product Announcement

## Nema 4 Opto Sensing Edge With Z-Flap Now Available

PHOTO 067 ▶▶▶

Opto Sensing Edge  
(Transmitter / Receiver)  
2.75" x 2.0" x 1.25"



### Manaras-Opera Introduces The Opto Sensing Edge - PHOTO 067

Manaras-Opera is pleased to showcase the Infrared Opto Sensing Edge - **PHOTO 067** - for use as an Entrapment Protection Device.

**PHOTO 067** is designed to provide protection against entrapment for Commercial and Industrial Doors. A loss of power, short, or blockage will signal the operator to stop and/or reverse the door to an open position.

#### Product Details

- Non-Monitored Opto Sensing Edge.
- Nema 4 enclosure IP65 offers added protection from water spray, dirt and dust.
- Infrared thru-beam technology reduces false reflective signals.
- Easy to align, convenient assembly and installation in the field.
- Unit travels with the leading edge of the door.
- Approximate 30' range.
- Power supply: 8-30 VAC / 12-42 VDC.
- Interface module / separate power and relay output wires.
- Operation temperature: -40°C to 85°C (-40°F to 185°F).
- Includes the control unit, 15' coil cord, Z-Flap holder, junction box, hardware kit.
- Also available for Monitored applications (**PHOTO 067A**).

For further information and pricing details, please contact your Manaras-Opera sales representative.

Toll free number: 1 800 361 - 2260  
[www.manaras.com](http://www.manaras.com)