

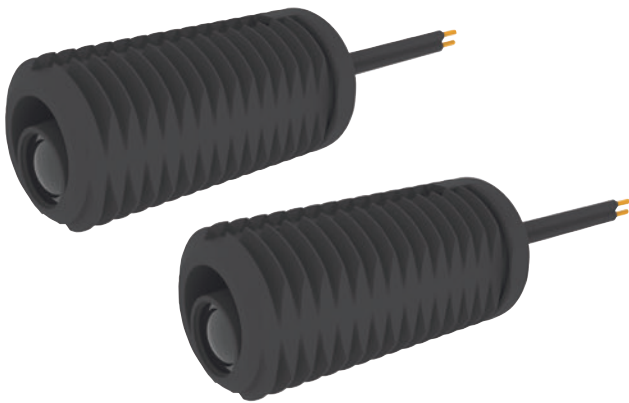
# Product Announcement

## Monitored Thru-beam Nema 1 Photoelectric Cells

PHOTO 070 

Monitored Photoelectric Cells  
(Transmitter / Receiver)

2.125" x 1.5" Ø



### Manaras-Opera Features PHOTO 070

Manaras-Opera is pleased to showcase their Monitored Thru-beam Photoelectric Cells - **PHOTO 070** - for use as a Primary Entrapment Protection Device to safeguard doors according to the requirements of **UL325**.

**PHOTO 070** are designed to provide monitored protection against entrapment for Commercial and Industrial Doors. When the signal between the two eyes is interrupted, the device will communicate with the operator to stop and reverse the door to an open position.

### Product Details

- Monitored Photoelectric Cells.
- Nema 1 enclosure. For indoor use.
- Infrared thru-beam technology reduces false reflective signals.
- Easy to align, convenient assembly and installation in the field.
- Approximate 45' range.
- Power supply: Self-powered by ECB main controller.
- Operation temperature: -12°C to 74°C (-10°F to 165°F).
- Includes the Transmitter and Receiver units, 30' of connection wire, L shape mounting brackets and hardware kit.

For further information and pricing details, please contact your Manaras-Opera sales representative.

Toll free number: 1 800 361 - 2260  
[www.manaras.com](http://www.manaras.com)