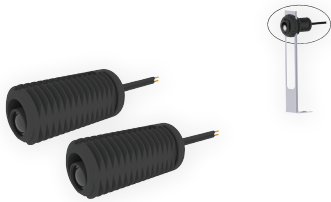


Photoelectric Cells

Monitored Photoelectric Cells

PHOTO 070



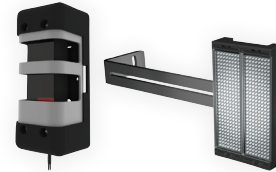
- Monitored
- UL325 Recognized Component
- Type: Thru-beam
- Range: 5' to 45' (approx.)
- Interior use
- Nema 1 enclosure
- Materials: ABS-PC
- Operation Temperature: -12°C to 74°C (-10°F to 165°F)
- Power Supply: Self-powered by ECB main controller
- Dimensions: 2.13"W x 1.5"Ø
- Dimensions (bracket): 1.5"W x 1.5"H x 6.75"D
- Includes: Transmitter, receiver, 30' of connection wire, L shape mounting brackets, hardware kit
- Compatible with: INTERFACE001, INTERFACE003

PHOTO 061



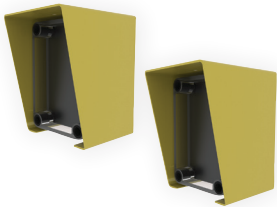
- Monitored
- UL325 Recognized Component
- Type: Thru-beam
- Range: 5' to 45' (approx.)
- Industrial environments
- Nema 4X, IP65 enclosure
- Materials: Thermoplastic elastomer (TPE)
- Operation Temperature: -25°C to 74°C (-13°F to 165°F)
- Power Supply: Self-powered by ECB main controller
- Dimensions: 2"W x 1.25"H x 6"D
- Dimensions (bracket): 1.5"W x 0.75"H x 3.58"D
- Includes: Transmitter, receiver, 3' of connection wire, soft brackets, L shape mounting brackets, hardware kit
- For 50' of connection wire: order PHOTO061A
- For sunlight reflection protection hood: order HOOD001

PHOTO 065



- Monitored
- UL325 Recognized Component
- Type: Retro-reflective
- Range: 5' to 40' (approx.)
- Harsh environments
- Nema 4X, IP65 enclosure
- Materials: Polyamide and steel
- Operation Temperature: -30°C to 60°C (-22°F to 140°F)
- Power Supply: Self-powered by ECB main controller
- Dimensions: 1.7 5"W x 4.25"H x 1.75"D
- Dimensions (reflector): 0.5"W x 3.5"H x 2"D
- Dimensions (bracket): 2"W x 1"H x 7"D
- Includes: Transmitter/receiver, reflector, 6.5' of connection wire, L shape mounting brackets, hardware kit
- For connection kit (1/2 NPT gland, 6.3' of 0.25" conduit, junction box): order PHOTO065A
- For replacement reflector: order PHOT0072

PHOTO 045M

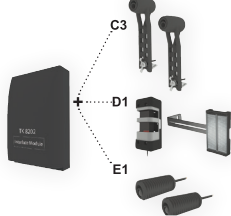


- Monitored
- Type: Thru-beam
- Range: 3' to 115' (approx.)
- Interior/exterior use
- Nema 4X enclosure
- Materials: Polystyrene, polycarbonate cover (photo-cells), anodized aluminum (protective hoods)
- Operation Temperature: -40°C to 77°C (-40°F to 171°F)
- Power Supply: 12 to 24 V_{AC} 50/60 Hz // 12 to 24 V_{DC}
- Dimensions: 2.56"W x 3.7"H x 2.24"D
- Includes: Transmitter, receiver, protective hoods
- For replacement hood: order PHOTO015
- For replacement photocell: order PHOTO016M
- For non-monitored function: order PHOTO045

Photoelectric Cells

Non-Monitored Photoelectric Cells

PHOTO 008...



- Photoelectric cells and interface module
- Renders any monitored photoelectric cell compatible with non-monitored controls
- Various combinations available:
PHOTO008C3 (incl. PHOTO061),
PHOTO008D1 (incl. PHOTO065),
PHOTO008E1 (incl. PHOTO070)
- For replacement interface module order:
INTERFACE001

PHOTO 075



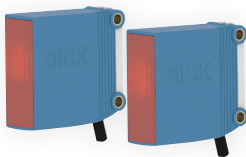
- Non-monitored (NO/NC relay output)
- UL325 Recognized Component
- Type: Retro-reflective
- Range: 32' (approx.)
- Interior/exterior use
- IP67 enclosure
- Materials: ABS, PMMA (photocell, reflector), zinc-plated steel (bracket)
- Operation Temperature: -30°C to 60°C (-22°F to 140°F)
- Power Supply: 24 to 240 V_{AC} 50/60 Hz // 24 to 240 V_{DC}
- Dimensions: 0.70" W x 1.90" H x 2.0" D
- Dimensions (reflector): 0.31" W x 2.02" H x 2.02" D (not shown)
- Dimensions (bracket): 2.76" W x 2.13" H x 0.87" D (not shown)
- Includes: Photocell, reflector, mounting bracket
- For replacement reflector order: PHOTO076

PHOTO 060



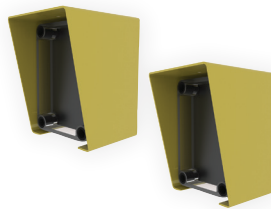
- Non-monitored (NO/NC relay output)
- UL325 Recognized Component
- Type: Retro-reflective
- Range: 39' (approx.)
- Interior/exterior use
- Nema 4/12, IP67 enclosure
- Materials: Reinforced ABS-PC
- Operation Temperature: -25°C to 55°C (-13°F to 131°F)
- Power Supply: 21.6 to 264 V_{AC} 50/60 Hz // 10.8 to 264 V_{DC}
- Dimensions: 3.20" W x 2.66" H x 1.00" D
- Dimensions (reflector): 0.37" W x 3.08" Ø
- Includes: Photocell, reflector, mounting bracket
- For replacement reflector: order PHOTO024

PHOTO 077



- Non-monitored (NO/NC relay output)
- UL325 Recognized Component
- Type: Thru-beam
- Range: 114' to 130' (approx.)
- Interior/exterior use
- IP67 enclosure
- Materials: ABS, PMMA (photocells), zinc-plated steel (brackets)
- Operation Temperature: -30°C to 60°C (-22°F to 140°F)
- Power Supply: 24 to 240 V_{AC} 50/60 Hz // 24 to 240 V_{DC}
- Dimensions: 0.70" W x 1.90" H x 2.0" D
- Dimensions (brackets): 2.76" W x 2.13" H x 0.87" D (not shown)
- Includes: Transmitter, receiver, brackets

PHOTO 045



- Non-monitored (NO/NC relay output)
- Type: Thru-beam
- Range: 3' to 115' (approx.)
- Interior/exterior use
- Nema 4X enclosure
- Materials: Polystyrene, polycarbonate cover (photocells), anodized aluminum (protective hoods)
- Operation Temperature: -40°C to 77°C (-40°F to 171°F)
- Power Supply: 12 to 24 V_{AC} 50/60 Hz // 12 to 24 V_{DC}
- Dimensions: 2.56" W x 3.7" H x 2.24" D
- Includes: Transmitter, receiver, protective hoods
- For replacement hood: order PHOTO015
- For replacement photocell: order PHOTO016
- For monitored function: order PHOTO045M

PHOTO 073



- Non-monitored
- Type: Retro-reflective
- Range: 30' (approx.)
- Classified hazardous location
- Nema 6P, IEC IP67, NAMUR enclosure
- Materials: Polyester (enclosure), acrylic (lens), stainless steel (hardware)
- Operation Temperature: -40°C to 70°C (-40°F to 158°F)
- Power Supply: 5 to 15 V_{DC}
- Dimensions: 1.75" W x 3.45" H x 2.13" D
- Dimensions (reflector): 0.28" W x 3.19" Ø
- Dimensions (bracket): 2.25" W x 2.25" H x 2.76" D (not shown)
- For use with certified intrinsically safe switching amplifiers and barriers
- Compatible with: SAFEPACK003
- Includes: Photocell, reflector, mounting bracket
- For replacement reflector order: PHOTO074

Photoelectric Cells

Non-Monitored Photoelectric Cells

PHOTO 059



- Non-monitored (NO/NC relay output)
- Type: Thru-beam
- Range: 3' to 115' (approx.)
- Classified hazardous location
- Nema 4X and 7 enclosure, NEC Class I Groups B/C/D, Class II Groups E/F/G, Class III, EExd IIC
- Materials: Aluminum die-cast, epoxy coating
- Operation Temperature: -40°C to 77°C (-40°F to 171°F)
- Power Supply: 12 to 24 V_{AC} 50/60 Hz // 12 to 24 V_{DC}
- Dimensions: 3.44"W x 4.69"H x 4.5"D
- Includes: Transmitter, receiver

Photoelectric Cells

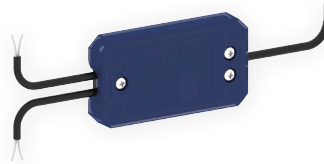
Components and Accessories

INTERFACE 001



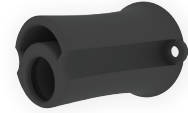
- Interface module
- Enables the connection of monitored photoelectric cells to an electronic/electromechanical control without monitoring function
- Interior use
- Nema 1 enclosure
- Materials: Plastic
- Operation Temperature: -30°C to 70°C (-22°F to 158°F)
- Power Supply: 24 V_{AC}/V_{DC}
- Dimensions: 2.62" W x 4.75" H x 1.34" D
- Includes: Interface module
- Compatible with: PHOTO061, PHOTO065, PHOTO070
- Used in: PHOTO008 series

INTERFACE 003



- Interface module
- Used to merge two monitored devices on the same monitored input on the ECB
- Interior / exterior use
- Nema 4 enclosure
- Materials: ABS / PA6 30% GF / TPE
- Operation Temperature: -25°C to 75°C (-13°F to 167°F)
- Power Supply: 24 V_{AC}/V_{DC}, 15 mA
- Dimensions: 1.5" W x 3" H x 0.5" D
- Includes: Interface module
- Compatible with: LIGHTCURTAIN001, LIGHTCURTAIN002, PHOTO045M, PHOTO061/061A, PHOTO065, PHOTO067A, PHOTO068C, PHOTO068D, PHOTO070, SENSEEDGE007UM, SENSEEDGE018UM, SENSEEDGE042, SENSEEDGE044UM, SENSEEDGE046M

HOOD 001



- Sunlight protection hood / visor
- To be installed on the receiver unit of compatible thru-beam type photoelectric cells to increase transmission accuracy
- Dimensions: 1.5" W x 1" Ø
- Includes: Hood, hardware
- Compatible with: PHOTO061/061A (receivers)

HOOD 002



- Sunlight protection hood / visor
- To be installed on receiver unit of compatible thru-beam type photoelectric cells to increase transmission accuracy
- Dimensions: 0.71" W x 0.47" Ø
- Includes: Hood

PHOTO 024



- Reflector
- Materials: Clear acrylic
- Dimensions: 0.37" W x 3.08" Ø
- Includes: Reflector
- Compatible with: PHOTO060

PHOTO 072



- Reflector
- Dimensions: 0.5" W x 3.5" H x 2" D
- Includes: Reflector
- Compatible with: PHOTO008D1, PHOTO065

Photoelectric Cells

Components and Accessories

PHOTO 074



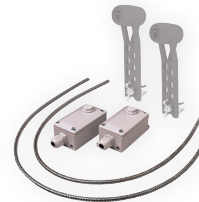
- Reflector
- Material: clear acrylic
- Dimensions: 0.28"W x 3.19"Ø
- Includes: Reflector
- Compatible with: PHOTO073

PHOTO 076



- Reflector
- Materials: ABS, PMMA
- Dimensions: 0.31"W x 2.02" H x 2.02" D
- Includes: Reflector
- Compatible with: PHOTO075

CONNECTSET 001



- Junction box and connection set for photoelectric cell installation applications which require all wiring to be done in a conduit
- Includes: Fittings to cover both sides of the door; flexible stainless steel conduit (3' W x 3/16"Ø) (x2), junction box (x2), wire nuts
- Not included: Photoelectric cells
- Compatible with: PHOTO061/061A, SENSEEDGE042, etc.