

Pneumatic Sensing Edge Kits

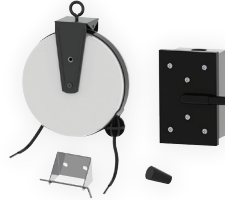
Non-Monitored Pneumatic Sensing Edge Kits

PNEUMATIC 004



- Pneumatic sensing edge kit
- Type: 2-wires / SPDT (NO and NC), non-monitored
- Nema 1 enclosure (air switch)
- Materials: Plastic (air switch), aluminum (junction box)
- Coil cord: 2-wire cable, 18 gauge, 12' cord extension max.
- Rubber hose to be ordered separately according to door width + 2'
- Weather stripping not included (supplied by door manufacturer)
- Includes: Air switch, junction box, coil cord, air hose plug
- Compatible with: HOSE001
- Replacement parts: order AIRSWITCH007, AIRSWITCH008, COIL014, PLUG005

PNEUMATIC 005



- Pneumatic sensing edge kit
- Type: 2-wires / SPDT (NO and NC), non-monitored
- Nema 1 enclosure (air switch)
- Materials: Plastic (air switch), aluminum (junction box), metal (take-up reel)
- Take-up reel: 2-wire cable, 18 gauge, 20' cord extension max.
- Rubber hose to be ordered separately according to door width + 2'
- Weather stripping not included (supplied by door manufacturer)
- Includes: Air switch, junction box, take-up reel, hanging bracket, air hose plug
- Compatible with: HOSE001
- Replacement parts: order AIRSWITCH007, AIRSWITCH008, PLUG005, REELITE005

PNEUMATIC 009



- Pneumatic sensing edge kit
- Type: 2-wires / SPDT (NO and NC), non-monitored
- Nema 1 enclosure (air switch)
- Materials: Plastic (air switch), aluminum (junction box), metal (take-up reel)
- Take-up reel: 3-wire cable, 16 gauge, 30' cord extension max.
- Rubber hose to be ordered separately according to door width + 2'
- Weather stripping not included (supplied by door manufacturer)
- Includes: Air switch, junction box, take-up reel, hanging bracket, air hose plug
- Compatible with: HOSE001
- Replacement parts: order AIRSWITCH007, AIRSWITCH008, PLUG005, REELITE003

PNEUMATIC 007



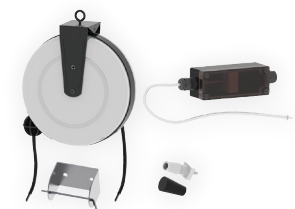
- Pneumatic sensing edge kit
- Type: 2-wires / SPDT (NO and NC), non-monitored
- Nema 1 enclosure (air switch)
- Materials: ABS (air switch)
- Coil cord: 2-wire cable, 18 gauge, 12' cord extension max.
- Rubber hose to be ordered separately according to door width + 2'
- Weather stripping not included (supplied by door manufacturer)
- Includes: Air switch, coil cord, air hose plug
- Compatible with: HOSE001
- Replacement parts: order AIRSWITCH018, COIL014, PLUG005

PNEUMATIC 008



- Pneumatic sensing edge kit
- Type: 2-wires / SPDT (NO and NC), non-monitored
- Nema 1 enclosure (air switch)
- Materials: ABS (air switch)
- Take-up reel: 2-wire cable, 18 gauge, 20' cord extension max.
- Rubber hose to be ordered separately according to door width + 2'
- Weather stripping not included (supplied by door manufacturer)
- Includes: Air switch, take-up reel, hanging bracket, air hose plug
- Compatible with: HOSE001
- Replacement parts: order AIRSWITCH018, PLUG005, REELITE005

PNEUMATIC 017A



- Pneumatic sensing edge kit
- Type: 2-wires / SPDT (NO), non-monitored
- Nema 4X enclosure (air switch)
- Materials: Polycarbonate (air switch), silicone (tube), metal (take-up reel)
- Take-up reel: 3-wire cable, 16 gauge, 30' cord extension max.
- Rubber hose to be ordered separately according to door width + 2'
- Weather stripping not included (supplied by door manufacturer)
- Includes: Air switch, take-up reel, hanging bracket, adapter, air hose plug
- Compatible with: HOSE001, HOSE009
- Replacement parts: order AIRSWITCH015, ADAPTER051, PLUG005, REELITE003

Pneumatic Sensing Edge Kits

Non-Monitored Pneumatic Sensing Edge Kits

PNEUMATIC 021



- Pneumatic sensing edge kit
- Type: 2-wires/SPDT (NO and NC), non-monitored
- Nema 4 enclosure (air switch)
- Rubber hose to be ordered separately according to door width + 2'
- Weather stripping not included (supplied by door manufacturer)
- Includes: Air switch/transmitter, receiver, tube, adapter, air hose plug, 3V CR2032 lithium battery (Tx)
- Compatible with: HOSE001
- Replacement parts: order AIRSWITCH017A, ADAPTER051, PLUG005

PNEUMATIC 021A



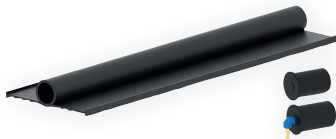
- Pneumatic sensing edge kit
- Type: 2-wires/SPDT (NO and NC), non-monitored
- Nema 4 enclosure (air switch)
- Rubber hose to be ordered separately according to door width + 2'
- Weather stripping not included (supplied by door manufacturer)
- Includes: Air switch/transmitter, receiver, tube, air hose end plug, angled connector end plug, 3V CR2032 lithium battery (Tx)
- Compatible with: HOSE010
- Replacement parts: order AIRSWITCH017A, PLUG011, PLUG012

PNEUMATIC 006



- Pneumatic sensing edge kit
- Type: 2-wires/NO, non-monitored
- Materials: Aluminum (air switch), polyurethane (air coil hose)
- Hazardous locations, Nema enclosure 3, 4 NEC Class I, Div 1 and 2, Groups B, C, D NEC Class II, Div 1 and 2, Groups E, F, G NEC Class III (air switch)
- Rubber hose to be ordered separately according to door width + 2'
- Weather stripping not included (supplied by door manufacturer)
- Includes: Air switch, air coil hose (max. 25' ext.) with fittings, air hose plug
- Compatible with: HOSE001
- Replacement parts: order AIRSWITCH001, ADAPTER043, CLAMP005, COILHOSE001, COILHOSE002, PLUG005

SENSEEDGE 045



- Air hose with rubber profile + end cap kit for pneumatic edge to be built in the field
- Materials: Soft rubber
- Section: 0.75" inside Ø/1" outside Ø + 2 edges to be inserted in mounting channel
- Sold per inch, made-to-order lengths, no returns or exchanges
- Mounting channel available
- Replacement parts: order HOSE010, PLUG011, PLUG012

Pneumatic Sensing Edge Kits

Components and Accessories

HOSE 001



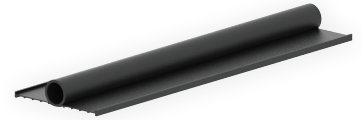
- Air hose
- Materials: EPT/EPDM
- 0.38" inside Ø/0.57" outside Ø
- Compatible with: AIRSWITCH015A, PLUG005, PLUG023, PNEUMATIC004, PNEUMATIC005, PNEUMATIC006, PNEUMATIC007, PNEUMATIC008, PNEUMATIC009, PNEUMATIC017A, PNEUMATIC021
- When ordering with pneumatic sensing edge kits: order according to door width + 2'

HOSE 009



- Air hose
- Materials: EPT/EPDM
- 0.5" inside Ø/0.75" outside Ø
- Compatible with: AIRSWITCH015A, PLUG005, PLUG023, PNEUMATIC017A
- When ordering with pneumatic sensing edge kits: order according to door width + 2'

HOSE 010



- Air hose with rubber profile for pneumatic edge to be built in the field
- Materials: Soft rubber
- Section: 0.75" inside Ø/1" outside Ø + 2 edges to be inserted in mounting channel
- Compatible with: AIRSWITCH016A, PNEUMATIC021A, SENSEEDGE042

PLUG 005



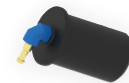
- Air hose plug
- Materials: Rubber
- Compatible with: HOSE001, HOSE009
- Used in: PNEUMATIC004, PNEUMATIC005, PNEUMATIC006, PNEUMATIC007, PNEUMATIC008, PNEUMATIC009, PNEUMATIC017A, PNEUMATIC021, TREADLE002, TREADLE002A

PLUG 011



- Air hose end plug
- 0.86" outside Ø
- Compatible with: HOSE010
- Used in: PNEUMATIC021A

PLUG 012



- Angled connector end plug
- 0.86" outside Ø
- Compatible with: HOSE010
- Used in: PNEUMATIC021A

Pneumatic Sensing Edge Kits

Components and Accessories

PLUG 023



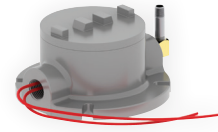
- Air hose plug (with hole)
- Materials: Rubber
- Compatible with: HOSE001, HOSE009
- Used in: PNEUMATIC004, PNEUMATIC005, PNEUMATIC006, PNEUMATIC007, PNEUMATIC008, PNEUMATIC009, PNEUMATIC017A, PNEUMATIC021

ADAPTER 051



- Connection adapter, 0.09" to 0.5" Ø, for air hose with 0.38" or 0.5" inside Ø
- Compatible with: AIRSWITCH015, AIRSWITCH016, AIRSWITCH017A, HOSE001, HOSE009
- Used in: AIRSWITCH015A, AIRSWITCH016B, PNEUMATIC017A, PNEUMATIC021, TREADLE002A

AIRSWITCH 001



- Air switch
- Hazardous locations
- Materials: Aluminum
- Nema enclosure 3, 4
- NEC Class I, Div 1 and 2, Groups B, C, D
- NEC Class II, Div 1 and 2, Groups E, F, G
- NEC Class III
- Type: 2-wires/NO, non-monitored
- Compatible with: ADAPTER043, COILHOSE001, COILHOSE002
- Used in: PNEUMATIC006

AIRSWITCH 007



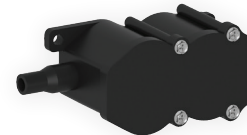
- Air switch
- Type: 2-wires/SPDT (NO and NC)
- Materials: Plastic
- Use with: Junction box AIRSWITCH008
- Includes: Junction gasket
- Compatible with: HOSE001
- Used in: PNEUMATIC004, PNEUMATIC005, PNEUMATIC009

AIRSWITCH 008



- Junction box
- Materials: Aluminum
- Use with: AIRSWITCH007
- Used in: PNEUMATIC004, PNEUMATIC005, PNEUMATIC009

AIRSWITCH 018

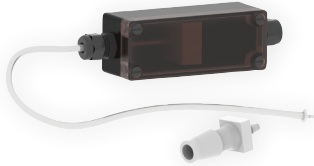


- Air switch
- Type: 2-wires/SPDT (NO and NC), non-monitored
- Materials: ABS
- Nema 12 enclosure
- Dimensions: 5.25"W x 2.125"H x 2.125"D
- Compatible with: HOSE001, HOSE009
- Used in: PNEUMATIC007, PNEUMATIC008, TREADLE002

Pneumatic Sensing Edge Kits

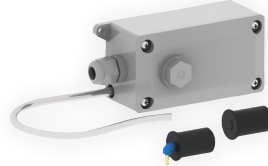
Components and Accessories

AIRSWITCH 015A



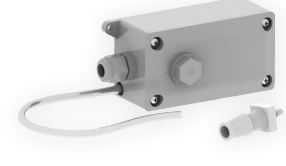
- Air switch kit
- Type: 2-wires/SPST (NO), non-monitored
- Materials: Polycarbonate (air switch), silicone (tube)
- Power Supply: 220 V_{AC}, 0.5 A max.; 48 V_{DC}, 1 A max.
- Dimensions: 6.63" W x 1.75" H x 1.75" D
- Dimensions (tube): 0.09" inside Ø x 12" L
- Adapter for tube with 0.5" inside Ø (HOSE009) and 0.38" (HOSE001)
- Nema 4X enclosure
- Includes: Air switch, connection adapter, tube
- Compatible with: HOSE001, HOSE009 (order separately according to door width + 2')
- Used in: PNEUMATIC017A, TREADLE002A
- Replacement parts: order AIRSWITCH015, ADAPTER051

AIRSWITCH 016A



- Air switch kit
- Type: 2-wires/SPST (NO), non-monitored
- Materials: ABS (enclosure), silicone (tube)
- Power Supply: 220 V_{AC}, 0.5 A max.
- Dimensions: 3.97" W x 1.91" H x 1.89" D
- Dimensions (tube): 0.09" inside Ø x 6" L
- IP65 enclosure
- Includes: Air switch, end and angle plugs, tube
- Compatible with: HOSE010 (order separately according to door width + 2')
- Replacement parts: order AIRSWITCH016, PLUG011, PLUG012

AIRSWITCH 016B



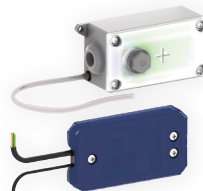
- Air switch kit
- Type: 2-wires/SPST (NO), non-monitored
- Materials: ABS (enclosure), silicone (tube)
- Power Supply: 220 V_{AC}, 0.5 A max.
- Dimensions: 3.97" W x 1.91" H x 1.89" D
- Dimensions (tube): 0.09" inside Ø x 6" L
- Adapter for tube with 0.5" inside Ø (HOSE009) and 0.38" (HOSE001)
- IP65 enclosure
- Includes: Air switch, adapter, tube
- Compatible with: HOSE001, HOSE009 (order separately according to door width + 2')
- Replacement parts: order AIRSWITCH016, ADAPTER051

AIRSWITCH 020



- Air switch
- Type: 2-wires/NO, non-monitored
- Materials: ABS (enclosure), silicone (tube)
- Dimensions: 3.29" W x 1.7" H x 1.95" D
- Dimensions (tube): 0.09" inside Ø x 12" L
- Compatible with: ADAPTER051 (HOSE001, HOSE009), PLUG012 (HOSE010)

AIRSWITCH 017A



- Wireless air switch with embedded transmitter and receiver
- Type: 2-wires/SPDT (NO and NC), non-monitored
- Materials (air switch / transmitter): ABS (enclosure), silicone (tube)
- Materials (receiver enclosure): ABS/PA6 30% FV/TPE
- Dimensions (air switch/transmitter): 3.97" W x 1.91" H x 1.89" D
- Dimensions (receiver): 1.5" W x 3" H x 0.5" D
- Dimensions (tube): 0.09" inside Ø x 6" L
- Nema 4 enclosure
- Includes: Air switch/transmitter, receiver, tube
- Compatible with: ADAPTER051 (HOSE001, HOSE009), PLUG012 (HOSE010)
- Used in: PNEUMATIC021, PNEUMATIC021A

AIRSWITCH 019

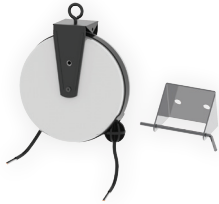


- Wireless air switch with embedded transmitter and receiver
- Type: 2-wires/SPDT (NO and NC), non-monitored
- Materials (air switch / transmitter): ABS (enclosure), silicone (tube)
- Power Supply: 10 to 40 V_{DC} / 10 to 30 V_{AC}, 50 mA max.
- Dimensions (air switch/transmitter): 3.29" W x 1.7" H x 1.95" D
- Dimensions (receiver): 3.75" W x 4.9" H x 1.2" D
- Dimensions (tube): 0.09" inside Ø x 12" L
- Includes: Air switch/transmitter, receiver, tube
- Compatible with: ADAPTER051 (HOSE001, HOSE009), PLUG012 (HOSE010)

Pneumatic Sensing Edge Kits

Components and Accessories

REELITE 005



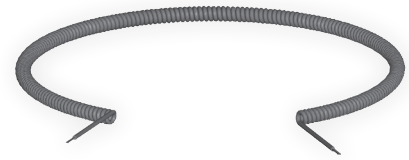
- Metal take-up reel
- Cables: 2-wire
- 18 gauge
- Max. Cord Extension: 20'
- Includes: Take-up reel, hanging bracket

REELITE 003



- Metal take-up reel
- Cables: 3-wire
- 16 gauge
- Max. Cord Extension: 30'
- Includes: Take-up reel, hanging bracket

COIL 014



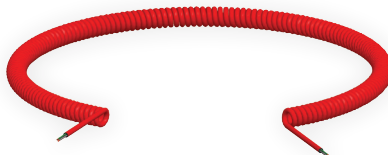
- Curly coil cord
- Cables: 2-wire
- 18 gauge
- Max. Cord Extension: 12'
- For 20' max. extension order: COIL001

COIL 001



- Curly coil cord
- Cables: 2-wire
- 18 gauge
- Max. Cord Extension: 20'
- For 12' max. extension order: COIL014

COIL 003



- Curly coil cord
- Cables: 4-wire
- 18 gauge
- Max. Cord Extension: 20'
- Color: Red-orange
- For 25' max. extension (black only), order: COIL010

COIL 010



- Curly coil cord
- Cables: 4-wire
- 18 gauge
- Max. Cord Extension: 25'
- Color: Black
- For 20' max. extension (red-orange) order: COIL003

Pneumatic Sensing Edge Kits

Components and Accessories

COIL 007



- Curly coil cord
- Cables: 3-wire
- 18 gauge
- Max. Cord Extension: 20'
- Color: Red-orange

COILHOSE 001



- Recoil air hose
- Material: Polyurethane
- Max. Cord Extension: 25'
- 1/4" EPT swivel fittings
- Operation Temperature: -36°C to 65°C
(-34°F to 150°F)
- Used in: PNEUMATIC006
- Compatible with: ADAPTER043, AIRSWITCH001,
COILHOSE002