



# Opera-MH Jackshaft Operator

Architectural Shop Drawing

Medium-Duty Hoist

## Project Details

Date: \_\_\_\_\_

Drawing No.: \_\_\_\_\_

Architect/Engineer: \_\_\_\_\_

Customer: \_\_\_\_\_

Page: \_\_\_\_\_ of \_\_\_\_\_

Project No.: \_\_\_\_\_

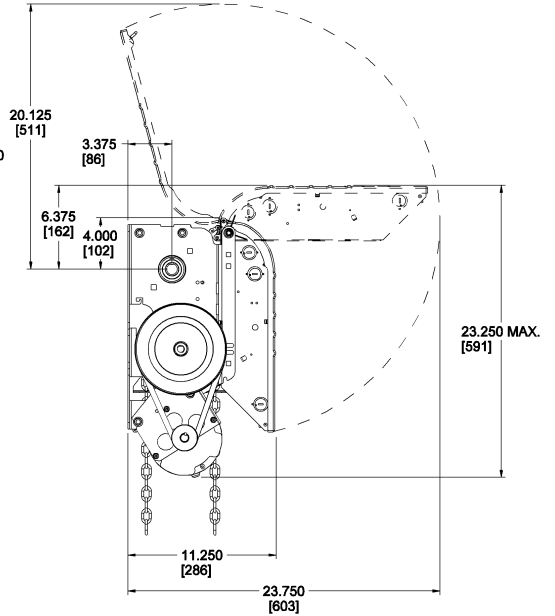
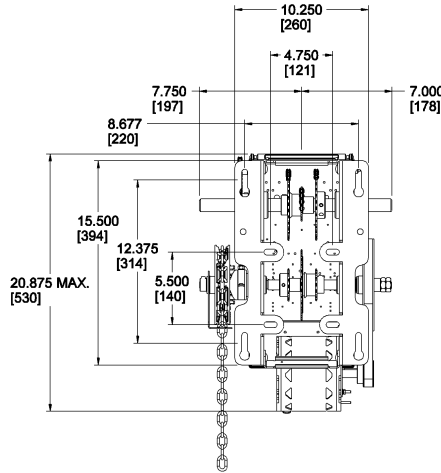
Project Name: \_\_\_\_\_

Contractor: \_\_\_\_\_

## Dimensions & Ratings

Motor Amperage Rating				
HP	Voltage - Phase			
	115V - 1PH	230V - 1PH	208/230V - 3PH	460V - 3PH
1/2	6.0	-	-	-

Reg. T.M. 9141-0720 Québec Inc.



## Ordering Specifications

Quantity: \_\_\_\_\_

Horsepower: \_\_\_\_\_

Phase: \_\_\_\_\_

Door Type: \_\_\_\_\_

Door Shaft Height: \_\_\_\_\_ H

Amount of High Lift: \_\_\_\_\_ H

Drum Type/Size: \_\_\_\_\_

Barrel Diameter: \_\_\_\_\_ Ø

Operator Nema Rating: \_\_\_\_\_

3-Push Button Station Rating: \_\_\_\_\_

Motor Circuit Type: \_\_\_\_\_

Model: \_\_\_\_\_

Volts: \_\_\_\_\_

Hertz: \_\_\_\_\_

Door Width/Height: \_\_\_\_\_ W x \_\_\_\_\_ H

Drive Sprocket: \_\_\_\_\_

Hand Chain (location): \_\_\_\_\_

Qty 3-PB Station(s)/Operator: \_\_\_\_\_

(One 3-PB station supplied/operator unless otherwise noted)

Photo Cell Upgrade: \_\_\_\_\_

(Nema-1 rating supplied unless otherwise noted)

## Additional Equipment & Options

\_\_\_\_\_

\_\_\_\_\_

\_\_\_\_\_

Refer to the operator's Specification Sheet and/or Wiring Diagram for General Information