

STATION 020

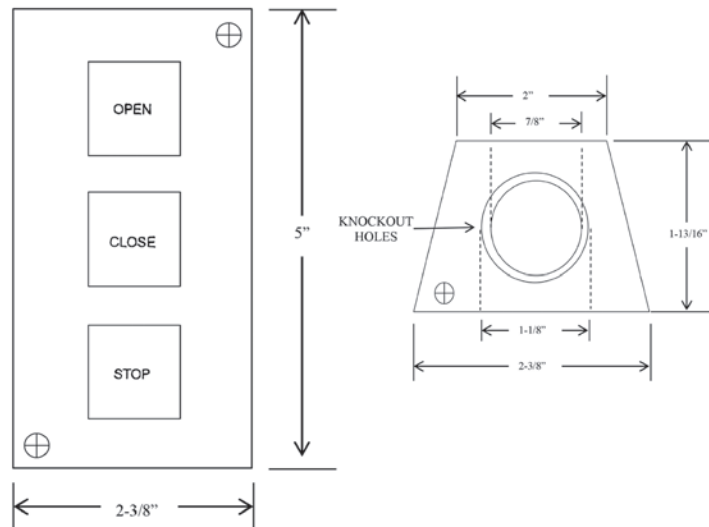
PUSH-BUTTON CONTROL STATION

STANDARD FEATURES

- 3-button: open, close and stop command.
- 2 NO and 1 NC (stop) contacts.
- Operator Operating Mode: B2 or C2 wiring (momentary contact to open / close or momentary contact to open / stop and constant pressure to close).
- Surface mount.
- Interior use.
- Housing Material: steel enclosure.
- Nema 1 enclosure.
- Dimensions: 2.38" x 5" x 1.81".
- Certifications: UL Listed.
- For French tags order: STATION084.
- Includes: control station unit, hardware kit.



DIMENSIONS



Manaras-Opera SS STATION020_084.2021.02.26 Rev 1 - Printed in Canada