

LEDSTRIP001/002/003/004

Specifications

WARNING

TO REDUCE THE RISK OF SEVERE INJURY OR DEATH TO PERSONS:

1. READ AND FOLLOW ALL INSTALLATION INSTRUCTIONS.
2. Always shut OFF the main power before performing any electrical intervention, installing an accessory or performing maintenance on the operator.

Product Components

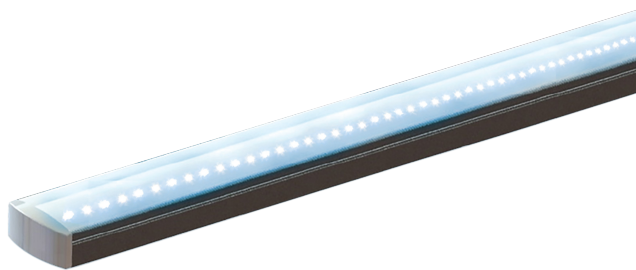


Figure 1 - LEDSTRIP001/002/003/004

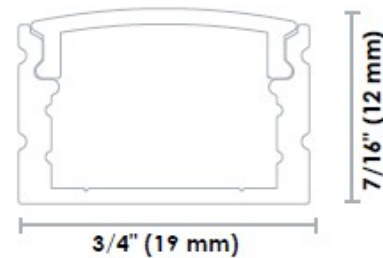


Figure 2 - Profile Dimensions



Figure 3 - U-Shape Aluminum Profile

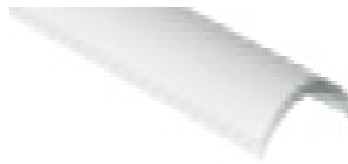


Figure 4 - Rounded Frosted Lens Cap



Figure 5 - End Caps

Components	Specifications
LED strips	IP67
Zone	Interior / Exterior -20°C to 40°C
Qty of LEDs per foot	9 LEDs / Ft.
LED type	5050 SMD
Angle of illumination	120 degrees / visible in daylight
LED life expectancy	~ 35 000 hours
Number of colors	Three independently managed colors : Red: 620 ~ 625nm Green: 515 ~ 520nm Blue: 465 ~ 470nm

LEDSTRIP001/002/003/004

Specifications

Components	Specifications
Supply voltage	24VDC
Electric power consumption	2.3W/Ft. max.
Profile	Aluminum, U-shaped The profile is made of high quality aluminum, providing a sleek and distinguished appearance for both residential and commercial/industrial applications. Fastening clips made of extruded aluminum.
Available lengths	LEDSTRIP001 = 14" (10 x LEDs), LEDSTRIP002 = 27" (20 x LEDs), LEDSTRIP003 = 46" (35 x LEDs), LEDSTRIP004 = 96" (70 x LEDs)

Connection

30 feet of wire supplied as standard (color coded).



Connection to the operator via the universal auxiliary output module kit (MOD168 or MODKIT168).

Code		Supply Voltage	Power (W)		
			1 color	2 colors	3 colors
LEDSTRIP001	MOD168 / MODKIT168	24VDC	0,8	1,6	2,4
LEDSTRIP002			1,6	3,2	4,8
LEDSTRIP003			2,8	5,6	8,4
LEDSTRIP004			5,6	11,2	16,8

For further information, please consult the operator's Installation & Instruction Manual or contact our Technical Support Department at **1-800-361-2260**.